



**North Tyneside Council**

**Health and Well-Being Board**

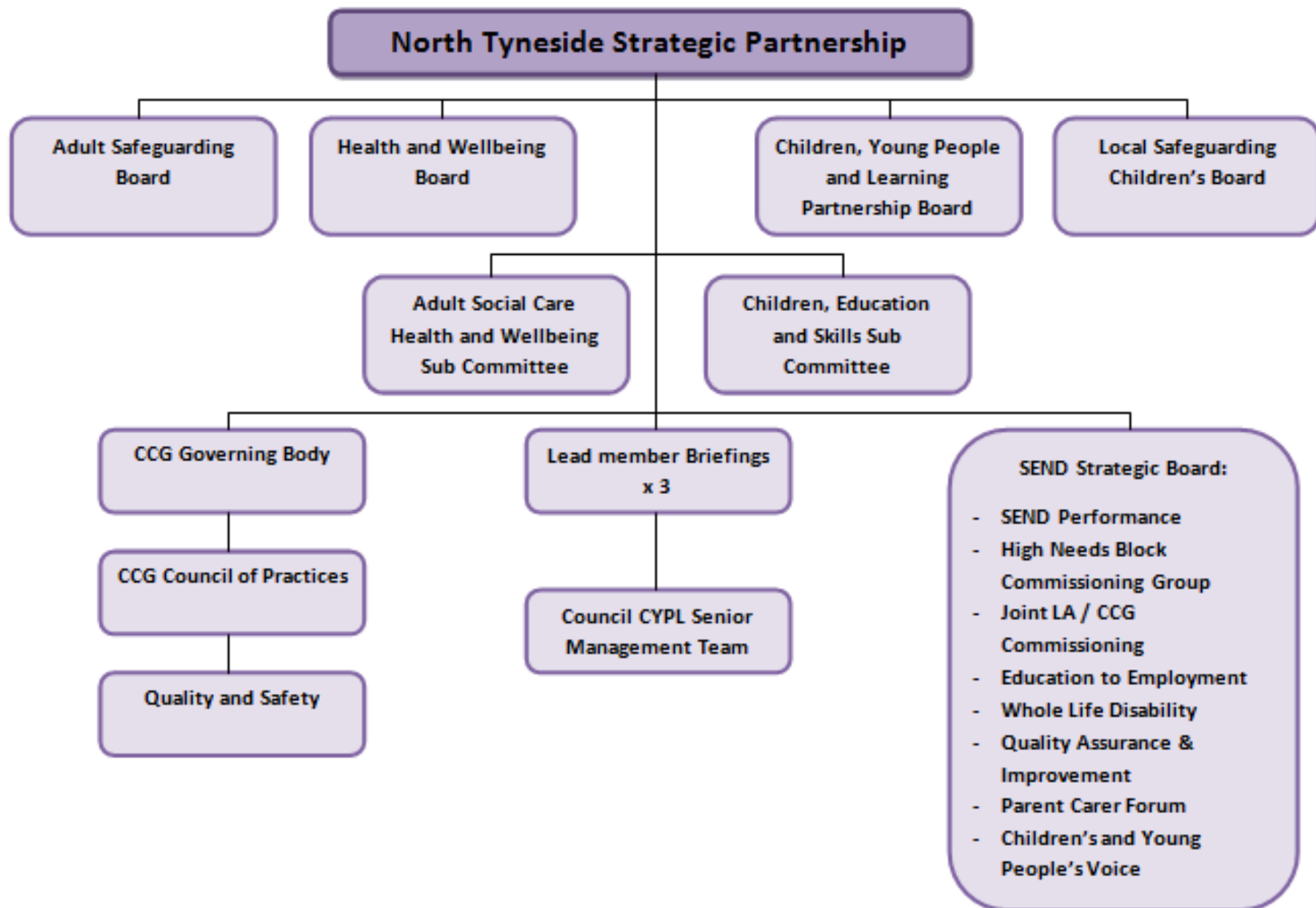
**10 January 2019**



Agenda!

## **What we will cover :**

- Strategic direction
- System updates
- Achievements
- Performance
- Need and demand
- Joint Area Inspection



# A reminder - our pledges

**Pledge 1:** Intervene early with evidence based,  
family focussed services

**Pledge 2:** Work in partnership to keep children  
in school

**Pledge 3:** Keep them safe at home and connected to  
their local communities



# Joint commissioning strategy

- Launched November 2018
- Joint planning framework for the local area partnership
- Developed and consulted on with SEND Board
- Signed off by CYPL Partnership and Health and Wellbeing Board



**North Tyneside  
Schools**

# SEND Strategy

“to take **control of their lives**, be as **independent** as possible and achieve their **full potential** in life”

“a **co-ordinated, personalised, creative and flexible** approach to providing and commissioning services”

“services which **prevent, delay or reduce needs** from escalating

“working alongside our families to focus on maximising inclusion **confidence** and **independence**”



# Staffing Update

- **New System Leaders:**
  - Sue Day Interim Senior Manager SEND
  - Kevin Burns School Improvement Officer Inclusion
  - Anne Foreman Designated Clinical Officer
  - Rebecca Eden Senior Manager (Special Projects)
- **Strengthening the Statutory Assessment and Review Team**



# **SEND system review**

## **A comprehensive review of all statutory assessment processes**

- EHC plans and letters that accompany each stage of the process
- Quality Assurance arrangements
- Decision making panels
- Commissioning arrangements
- Procurement of an electronic records management system
- Tribunal arrangements
- Parental and student views
- Governance and risk management arrangements
- A refreshed SEND Local Offer



# Achievements

- All special schools rated good by Ofsted
- Positive outcome from DfE visit
- Strengthening partnership commitment and working across Education, Health and Social Care



# Performance

- ✓ Increased usage of **Local Offer**
- ✗ Decline in % **EHCPs** completed within 20 weeks currently below latest national %
- ✓ **Attainment outcomes** significantly better than national for SEN Support pupils and in line with national for pupils with an EHCP
- ✗ ✓ Overall **absence increasing** but compares well with national data
- ✓ Lower percentage of **exclusions**, both fixed term and permanent, than nationally
- ✓ % of SEND pupils who are in **education, employment or training**, in-line with national
- ✓ Initial waiting times for **CAMHS** have reduced
- ✗ • Long waiting times on some CAMHS pathways e.g. **Neurodevelopmental**

# SEND need and demand

- % **EHCPs** significantly higher than national and increasing
- % **SEN Support** (and all SEND) increasing but significantly lower than national
- **LAC** – 55% SEND compared to 57% nationally
- **CIN** – 47% SEND compared to 46% nationally
- % **CIN with EHCP** sig. higher than nationally



# EHC plans

	14/15	15/16	16/17	17/18
<b>Total Number EHCP maintained by NT (source: SEN2)</b>	<b>1012</b>	<b>1038</b>	<b>1075</b>	<b>1102</b>

**The number of EHC Plans is rising** - increased by 90 over the four academic years from 2014/15 to 2017/18, an increase of 8.9%; the biggest increase has been post-16

# Statutory assessments

**Increasing demand for statutory assessments for EHCPs in the Autumn term**

Time Period	Number of EHCP Started
1/9/16 - 9/11/16	30
1/9/17 - 9/11/17	24
1/9/18 - 9/11/18	67

- A significant increase in the first 2 months of this academic year
- Pressures within the Statutory Assessment Team, Educational Psychology Service and commissioned services
- We are developing a new panel approach

# Placement sufficiency issues

**In year admissions to the LA with an EHCP and needing specialist provision has increased in recent years:**

- 2014/15     x 18
- 2015/16     x 22
- 2016/17     x 23
- This has placed increased pressure on sufficiency of places, particularly for SEMH, ASD and PMLD
- Our SEND Review is focussed on managing demand across the whole system and ensuring sufficient, high quality provision in borough.

# **Review Work**

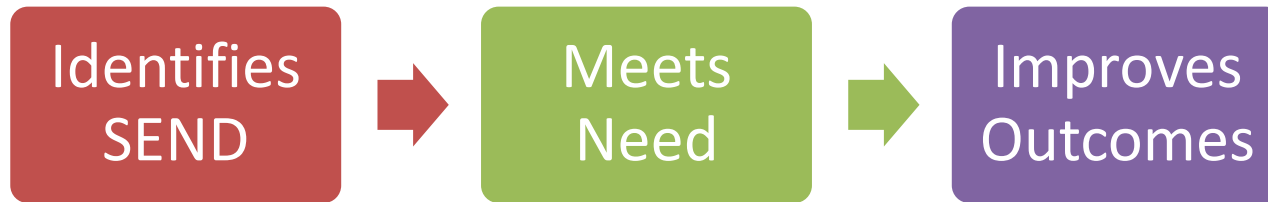
- **Sufficiency of places including the DfE SEND reform capital grant (£616k)**
- **Additional Resourced Provision (ARP) review**
- **Review of commissioned services:**
  - Referral and entry arrangements
  - Performance against KPIs
  - Staffing arrangements
  - Needs and trends
  - Collaboration – inc Health
  - Key challenges and pressures inc funding
  - Preparation for adult hood/transitions
  - Recommendations - May 2019

# Review Work

- **Neurodevelopmental**- there has been a significant increase in referrals , CCG has invested in year & working with the provider to reduce waiting times .
- **CAMHS** review scheduled to ensure all elements of the service are fit for purpose and meeting assessed need. This will include social work input into cases following disinvestment.



# Finally, inspection



- In Cumbria and the NE (August 2018) 83% of inspections have been identified by Ofsted as areas of concern and subject to a written notice to improve
- Our work with schools is effective as is the single agency work in health and social care.
- Our joint working across education, health and social care continues to need to be strengthened as evidenced in the EHCP's.

Question?