

Indices of Multiple Deprivation 2019:

North Tyneside

Policy, Performance and Research

1 October 2019



North Tyneside Council

This document has been produced by the Policy, Performance and Research team. It based on the Indices that are published by the Ministry for Housing, Communities and Local Government (MHCLG).

Please note that indicators in the 2019 Indices of Deprivation relate to various financial years, including 2015/16 – 2017/18.

October 2019

Contents

Executive Summary	Page 4
1. The English Indices of Multiple Deprivation	Page 5
1.1 Using the IMD 2019	Page 5
2. Relative deprivation in North Tyneside	Page 6
2.1 Overview of North Tyneside	Page 6
2.2 Most deprived	Page 8
2.3 Least deprived	Page 8
3. North Tyneside Wards	Page 9
4. A national and regional view	Page 20

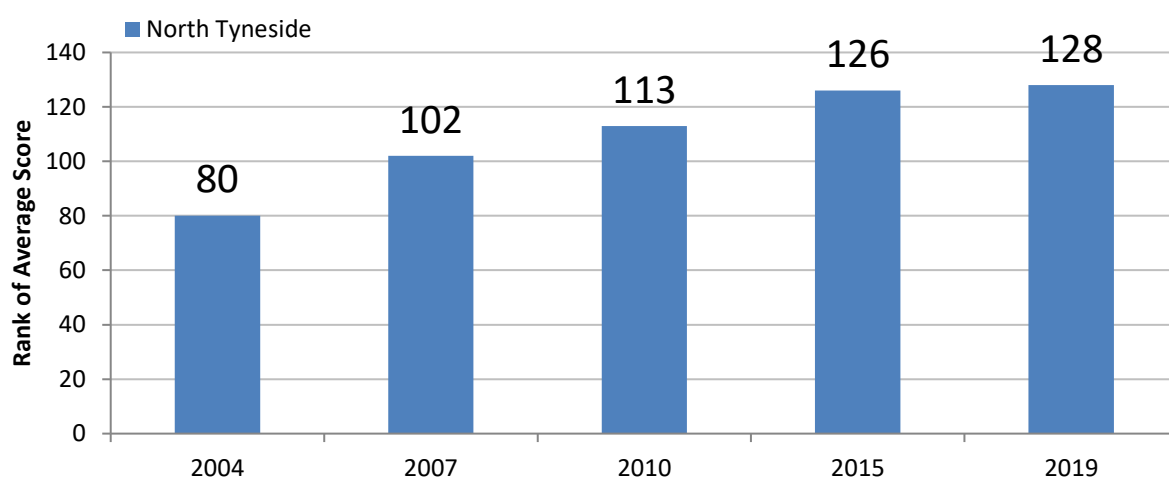
Executive Summary

- **In 2019 North Tyneside is less deprived, relative to England, than it was in 2015**

North Tyneside is ranked 128 out of 317¹ Local Authorities (Lower Tier) in England (higher is better). In 2015 North Tyneside was ranked 126

This continues the improving trend² from previous iterations of IMD, which is shown in the chart below (higher is better)

Index of Multiple Deprivation Rank of Average Rank 2004 - 2019



- While the overall number of local neighbourhoods within the most deprived 20% in England has remained level since 2015, there has been an increase in the number of neighbourhoods that are within the most deprived 10% of communities in England.

In contrast there has been a reduction in the number of communities that are judged to be the most deprived 10% to 20% category of communities in England.

- There has been no change in the number of neighbourhoods that are in the least 10% deprived decile
- 9.3% (19,019³) of North Tyneside residents live in neighbourhoods judged to be in the 10% most deprived in England.
- 11.8% (24,219) residents live in the 20% most deprived neighbourhoods.

¹ 2015 data has been rebased to reflect that there are now only 317 Lower Tier LA's (In 2015 there were 326 Lower Tier LA)

² As defined by the Index of Multiple Deprivation Rank of Average Scores

³ Based on the 2017 Mid Year Population Estimates

1. The English Indices of Multiple Deprivation

The English Indices of Deprivation 2019 are based on 39 component indicators, organised across seven domains⁴ (and sub-domains) of deprivation which are combined, using appropriate weights, to calculate the Index of Multiple Deprivation (IMD).

The following domain scores are weighted and combined to produce an overall IMD.

- Income Deprivation (22.5%)
- Employment Deprivation (22.5%)
- Education, Skills & Training Deprivation (13.5%)
- Health Deprivation and Disability (13.5%)
- Crime (9.3%)
- Barriers to Housing and Services (9.3%)
- Living Environment Deprivation (9.3%)

This is an overall measure of multiple deprivation experienced by people living in an area and is calculated for every Lower layer Super Output Area (LSOA⁵) in England. An LSOA has an average population of 1,500 people, with a lower threshold of 1,000, and an upper threshold of 3,000.

There are 32,844 LSOA's in England; they are ranked according to their level of deprivation relative to that of other areas, 1 being classed the most deprived and 32,844 being the least.

1.1 Using the IMD 2019

The data can be used to assess which parts of North Tyneside face particular challenges, down to very small geographical areas. It is common to describe how relatively deprived an area is by saying whether it falls among the 10% or 20% most deprived areas in England.

It is important to note that the indices are relative measures of deprivation. They do not indicate how much more deprived an area is, just that one is more deprived than the other. They are not a measure of affluence, i.e. the area ranked as most deprived is not necessarily the least affluent.

Deprivation scores are based on the proportion of people living in a district or LSOA who are classed as deprived in circumstance and lifestyle, not whether the area itself is deprived. However it is not possible to identify deprived people, because you do not have to live in a deprived area to be deprived.

The scores should not be compared between domains as they have different minimum and maximum values and ranges. To compare between domains, only the ranks should be used.

⁴ Domains of deprivation: Income, Employment; Education, Skills and Training; Health and Disability; Crime; Barriers to Housing and Services; and Living Environment.

⁵ LSOA (Lower Layer Super Output Area) is a unit of geography for the collection and publication of small area statistics. There are 32,844 LSOA's in England, and 131 in North Tyneside.

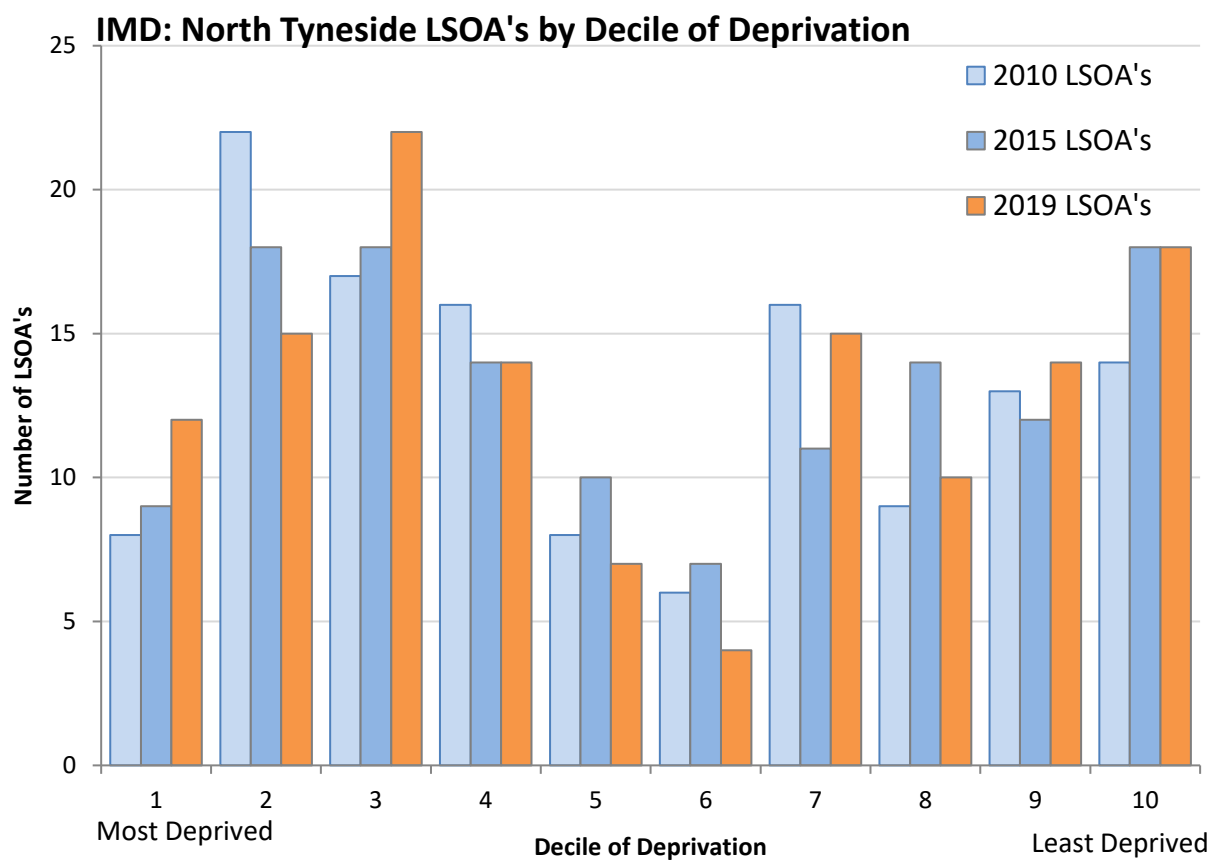
2. Relative deprivation in North Tyneside

2.1. Overview of North Tyneside

While North Tyneside has improved, relative to England, there has been an increase in the number of small neighbourhoods that are within the most deprived 10% of communities in England.

In contrast there has been a reduction in the number of communities within the most deprived 10% to 20% of communities in England.

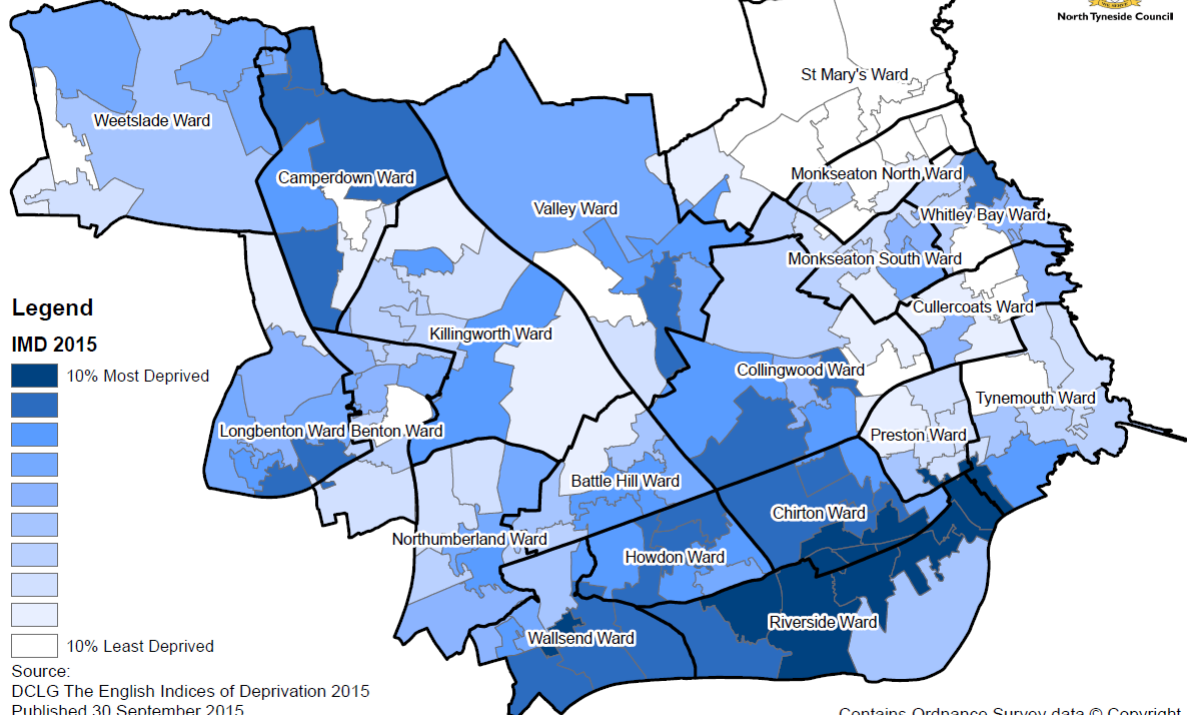
The chart below shows the movement in overall deprivation by decile for the LSOA's in North Tyneside, between the 2019 IMD, 2015IMD and the 2010 IMD.



The two maps on the next page show the relative deprivation in North Tyneside for IMD2015 compared to IMD 2019

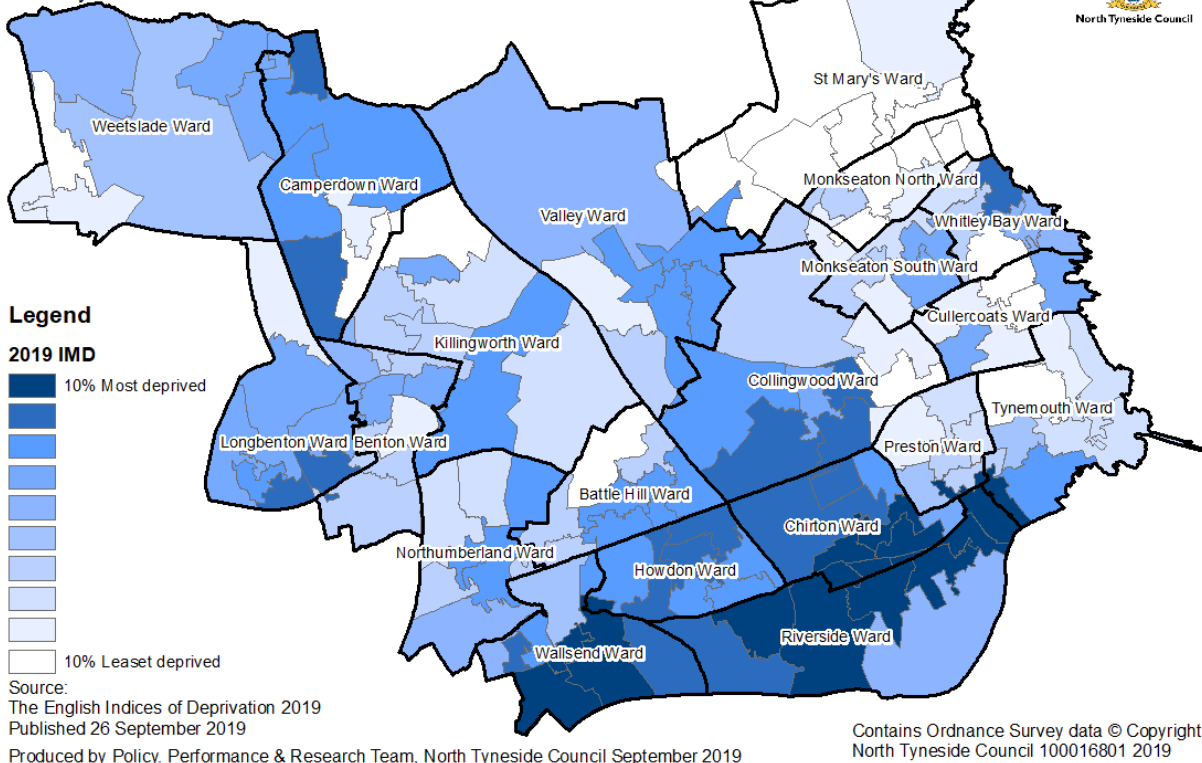
2015 Index of Multiple Deprivation – North Tyneside

English Indices of Deprivation 2015:
National rank of Index of Multiple Deprivation (IMD)
by Lower Super Output Area (LSOA)
North Tyneside



2019 Index of Multiple Deprivation – North Tyneside

English Indices of Deprivation 2019:
National rank of Index of Multiple Deprivation (IMD)
by Lower Super Output Area (LSOA)
North Tyneside



2.2. Most Deprived

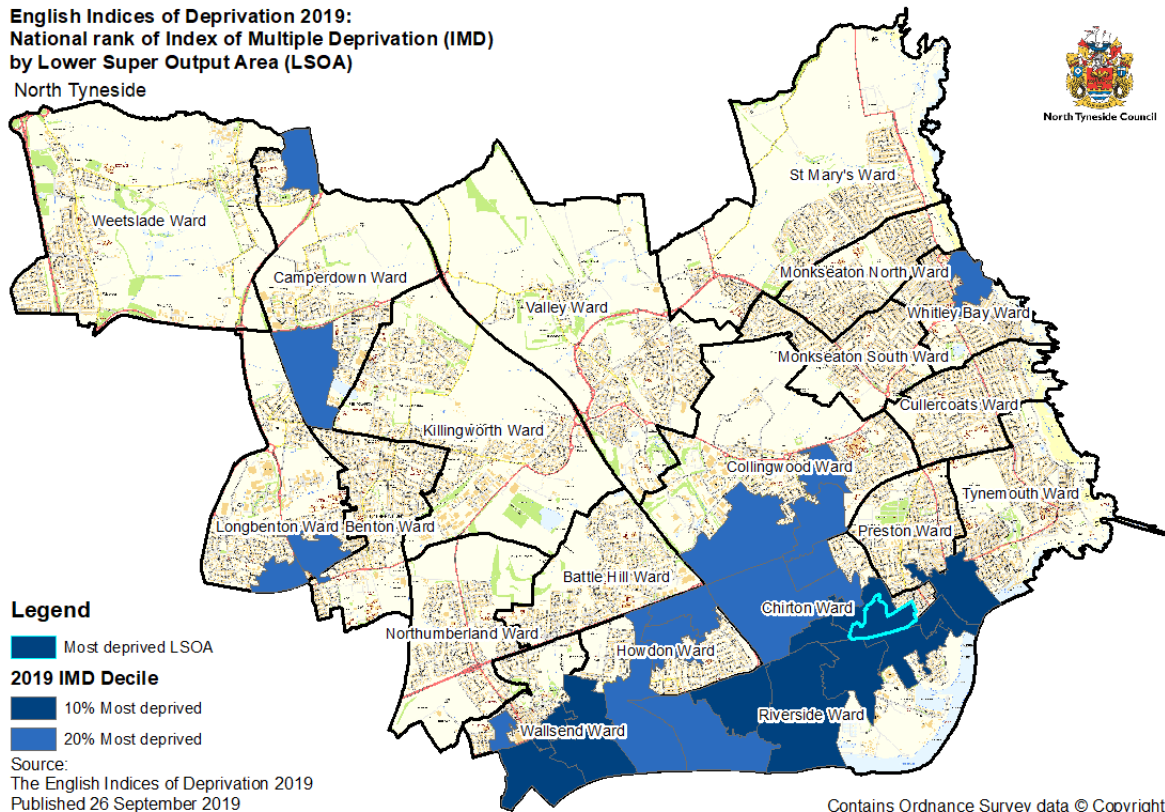
There are currently 131 LSOA's in North Tyneside, of which, twelve are in the most deprived (worst 10%) in England.

The previous IMD in 2015 reported nine North Tyneside LSOA's in the most deprived 10%.

There are fifteen LSOA's in the 20% most deprived in England. Previously, in the 2015 IMD, there were eighteen LSOA's in the 20% most deprived in England.

10% and 20% most deprived areas of North Tyneside

English Indices of Deprivation 2019:
National rank of Index of Multiple Deprivation (IMD)
by Lower Super Output Area (LSOA)
North Tyneside



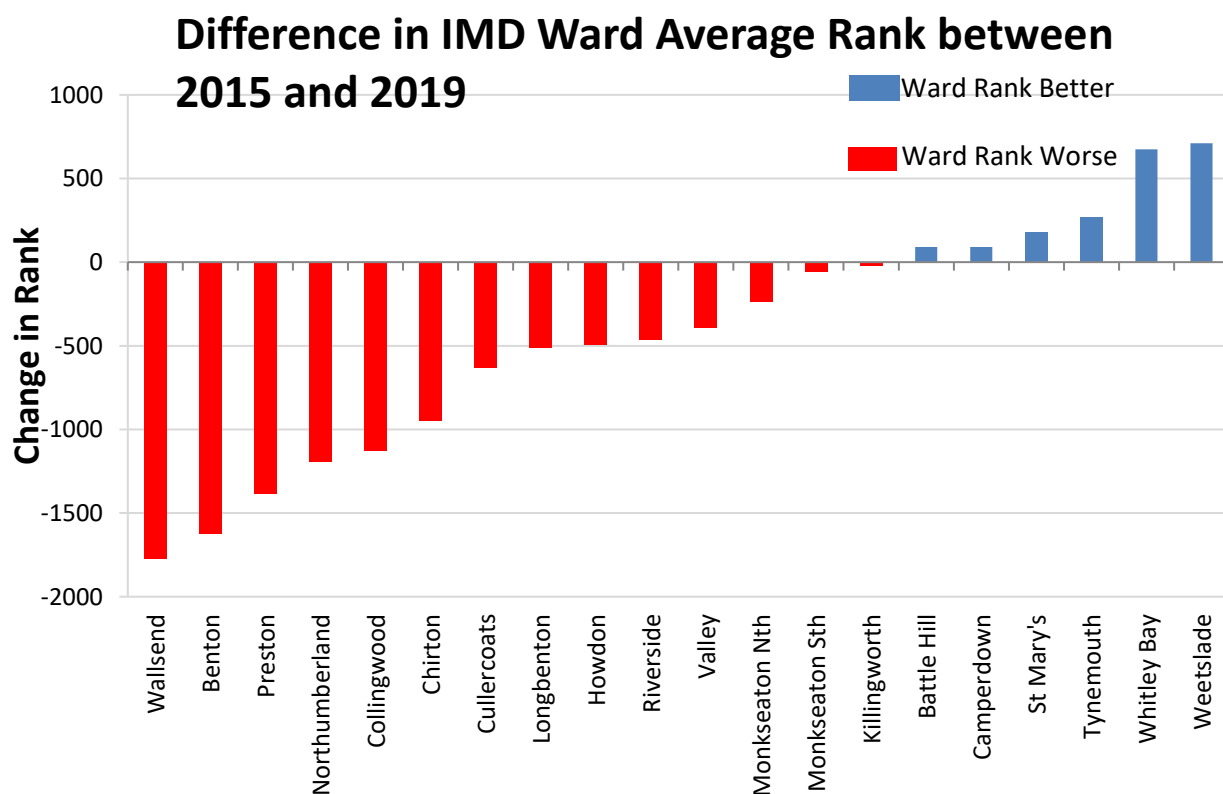
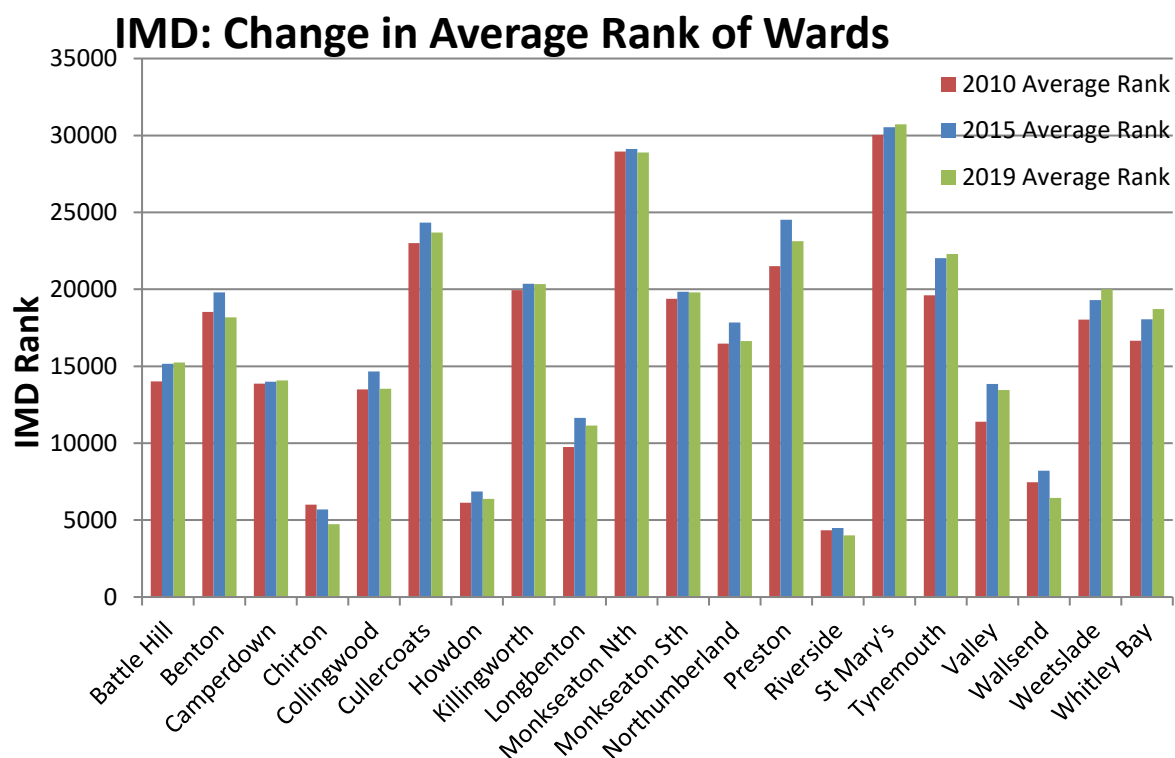
2.3. Least Deprived

There has been no change in the number of small neighbourhoods that are in the least deprived areas in England.

Eighteen LSOA's in North Tyneside are in the least 10% deprived decile.

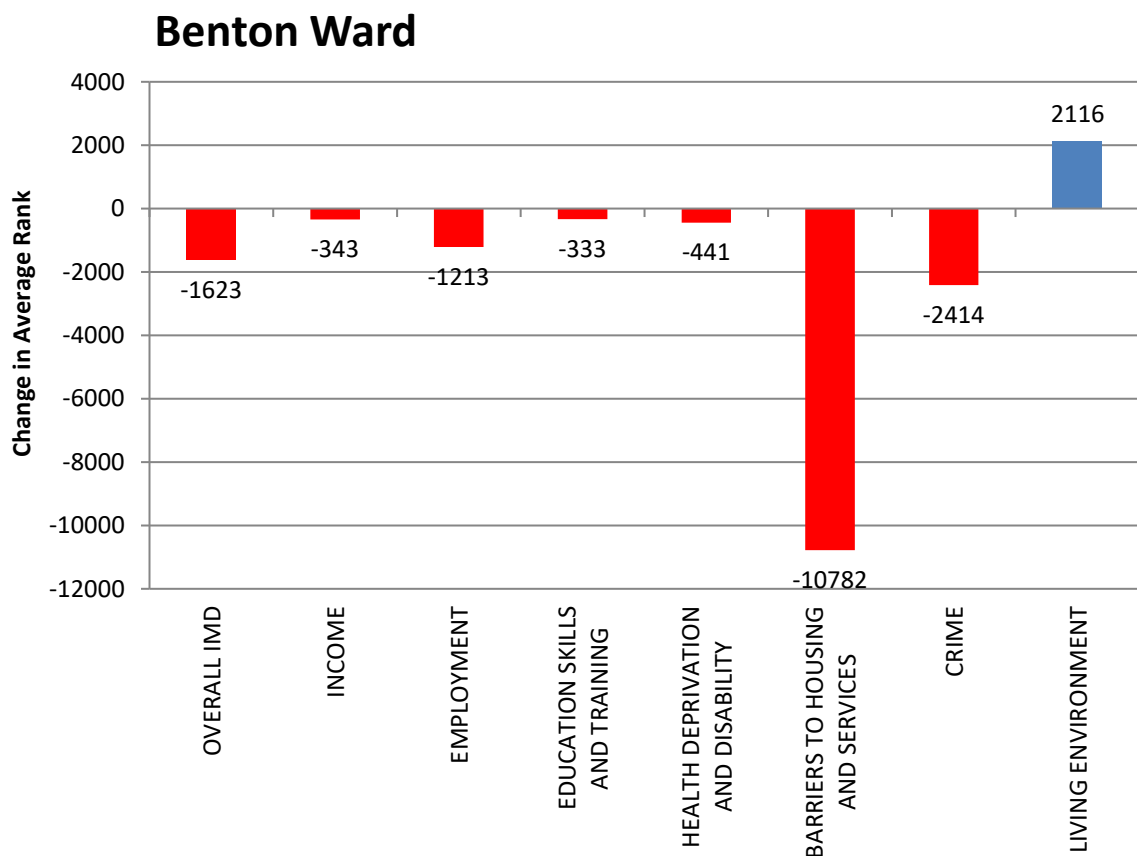
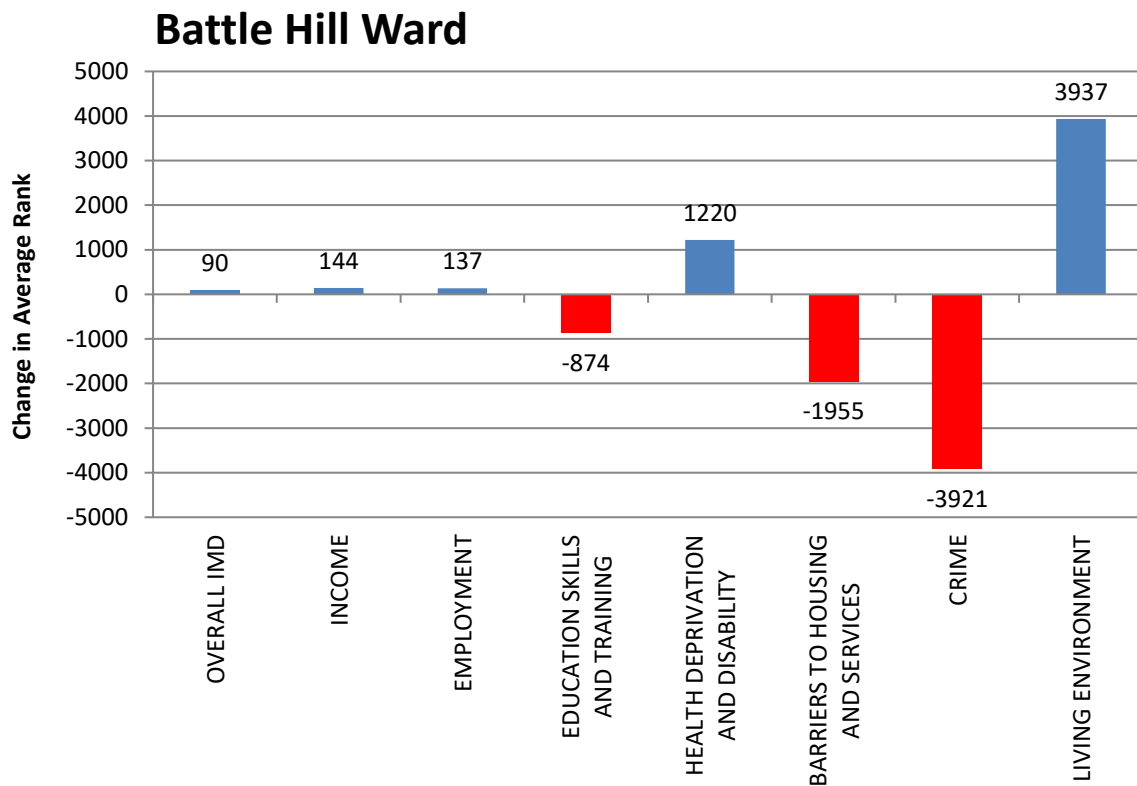
3. Ward level information

The rank of the individual LSOA's can be aggregated and applied at a Ward level to give an IMD rank by Ward.

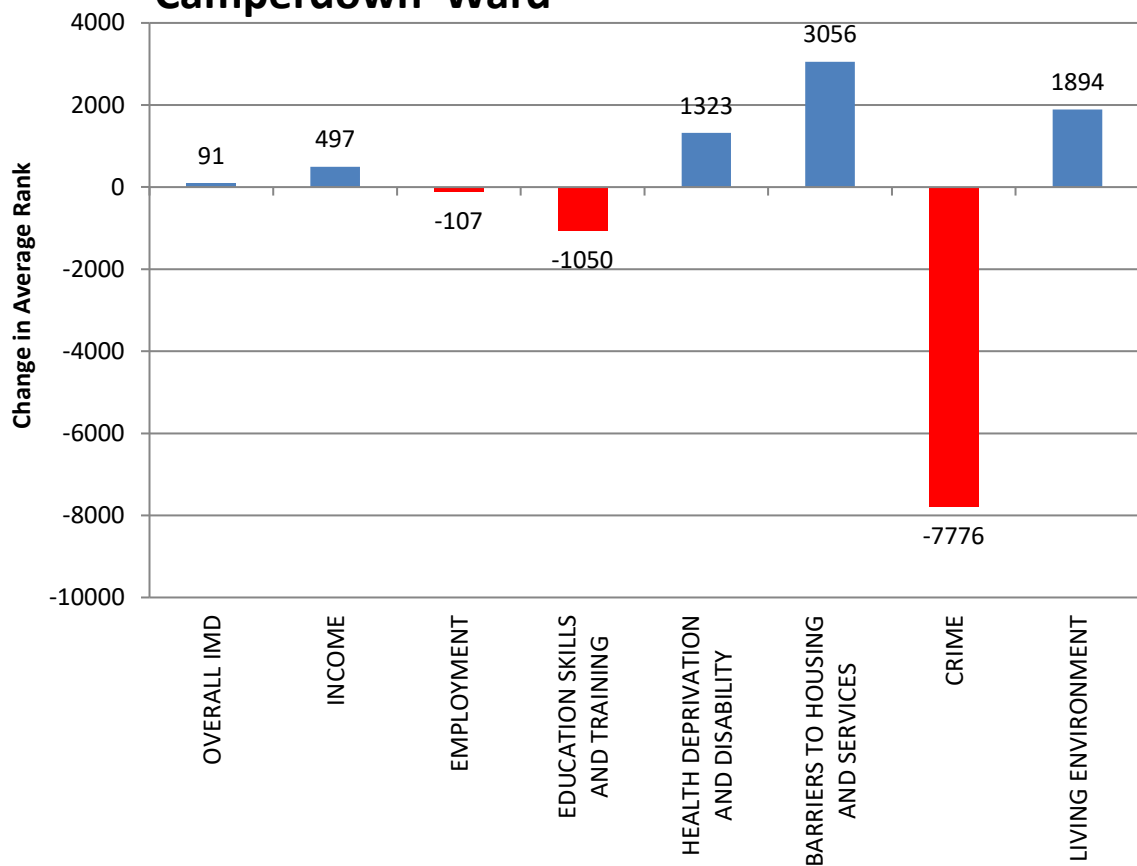


Of the 20 North Tyneside Wards, 13 have seen their overall national rank worsen from the previous IMD, and 7 have improved, relative to the rest of the Country.

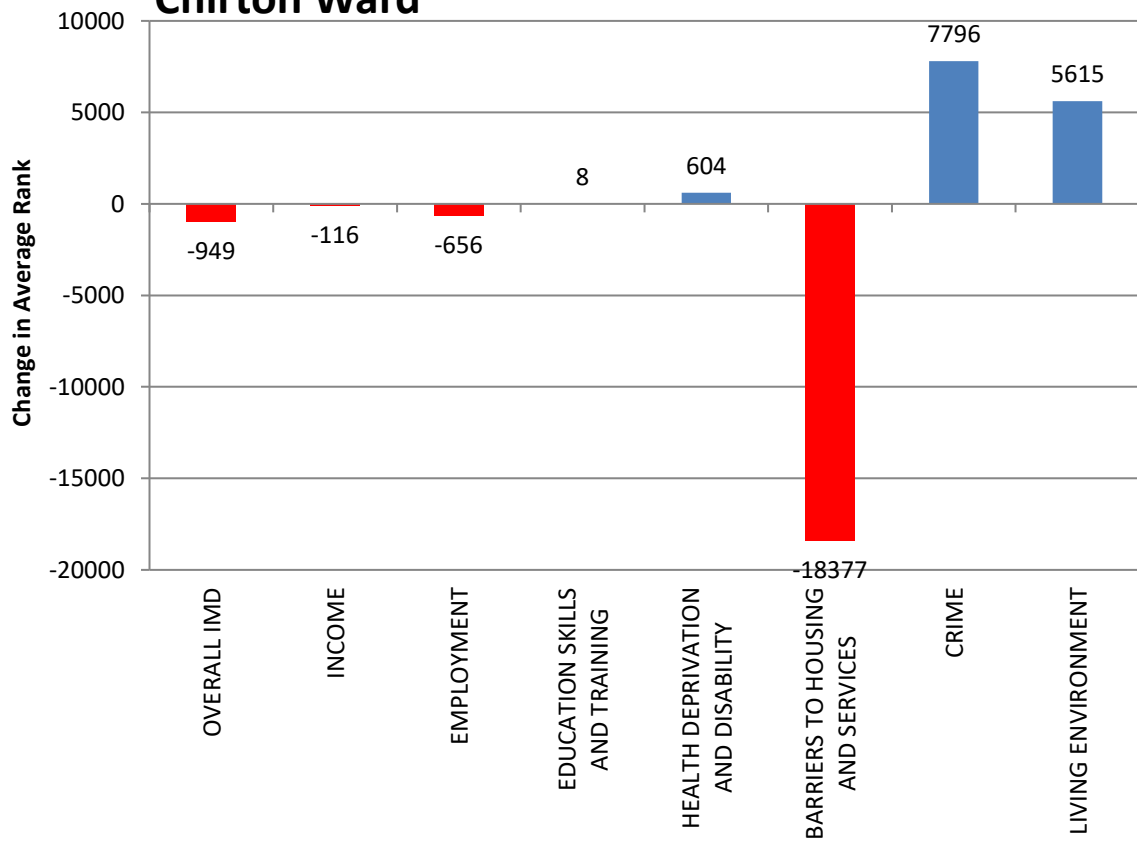
Change in Average Rank by IMD Domain



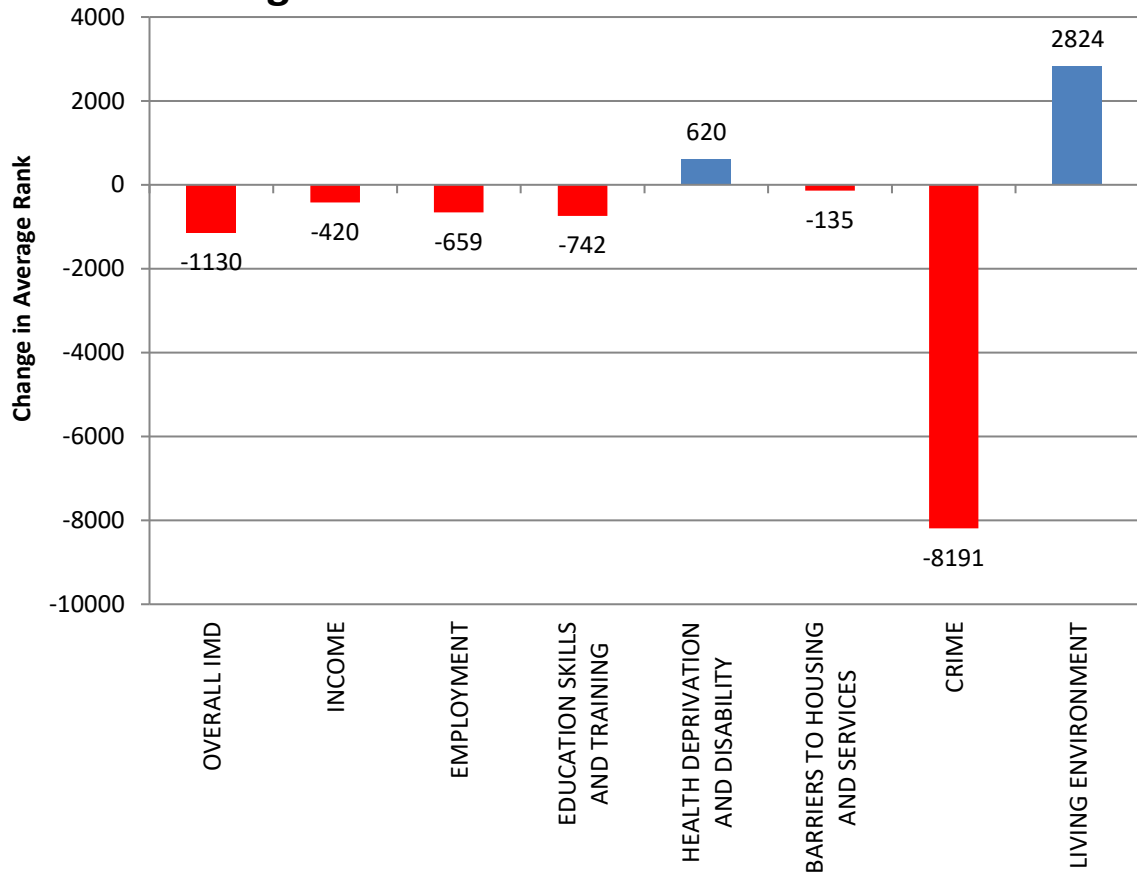
Camperdown Ward



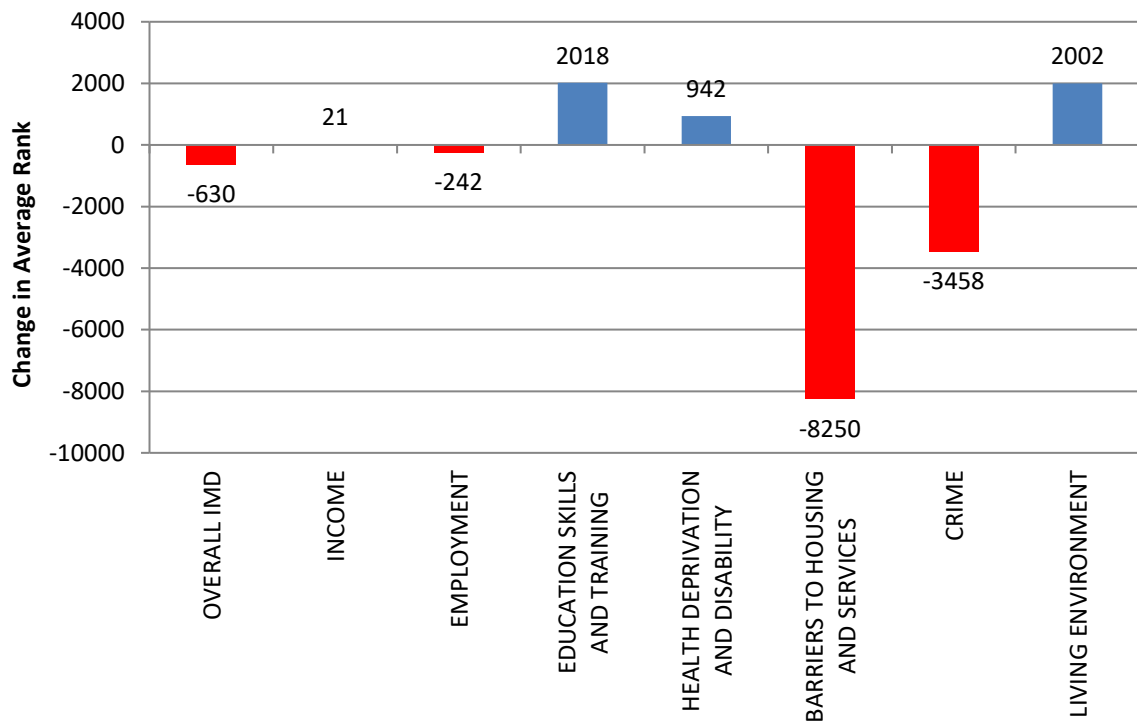
Chirton Ward



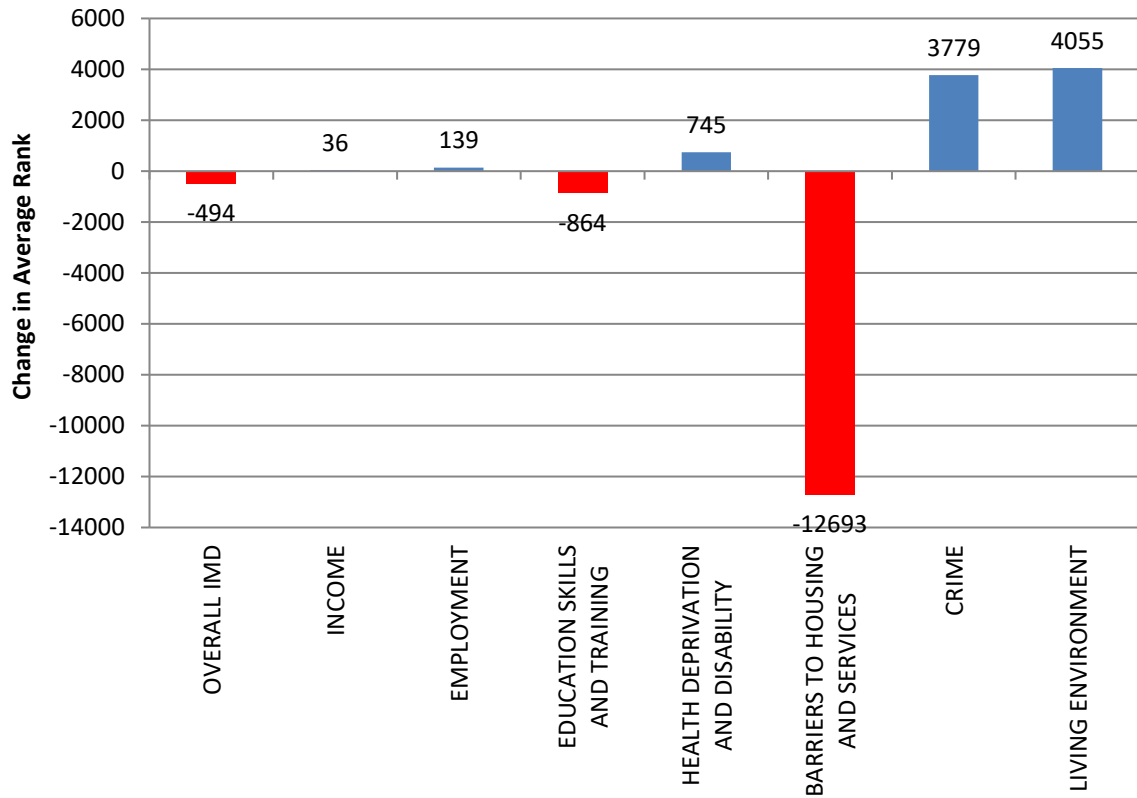
Collingwood Ward



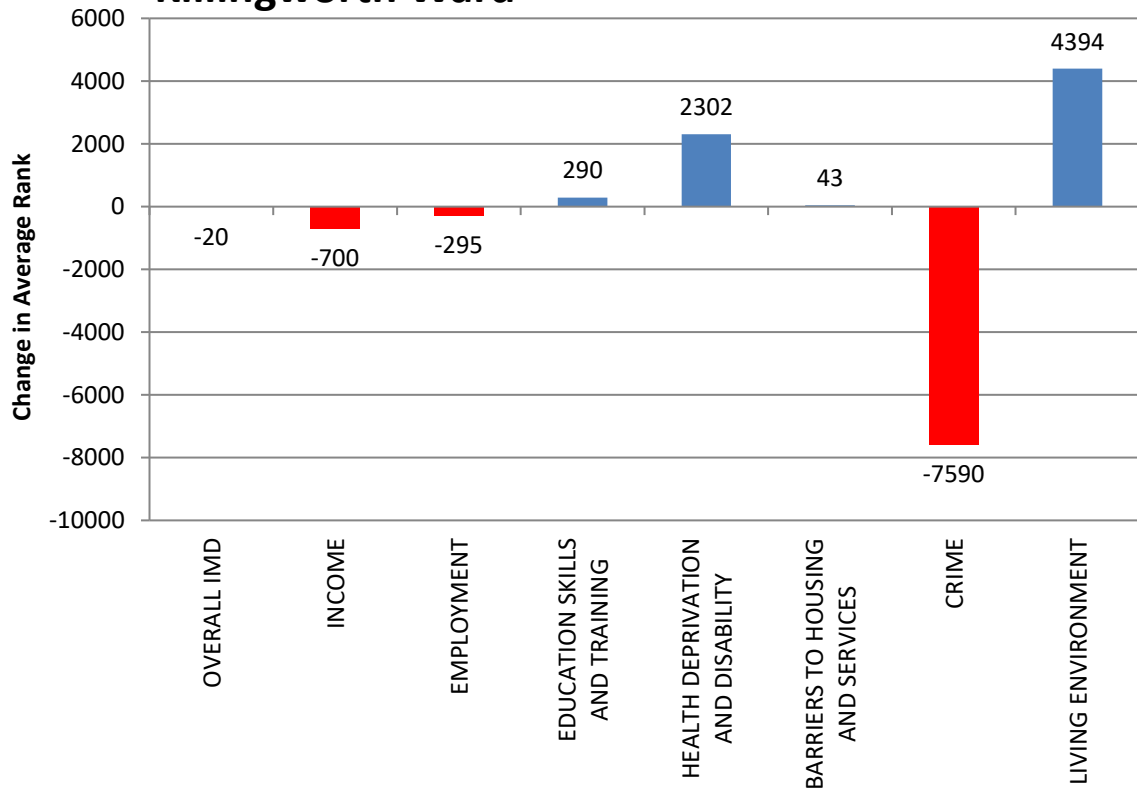
Cullercoats Ward



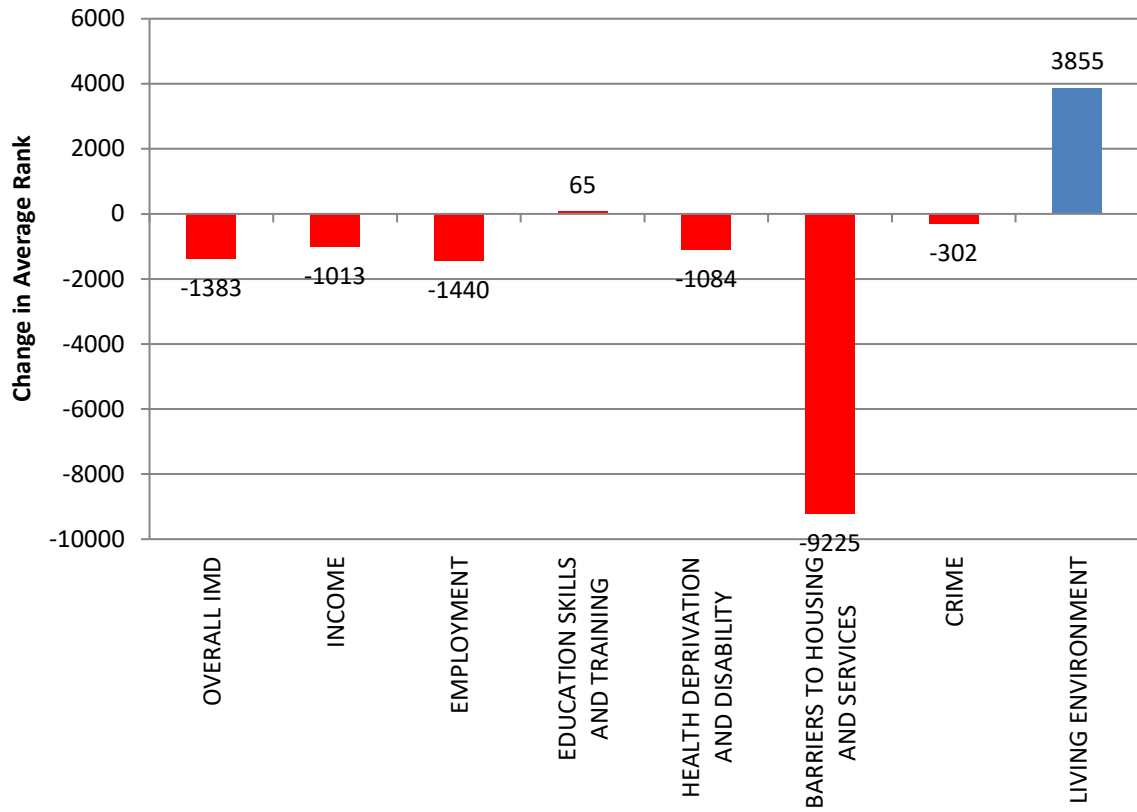
Howdon Ward



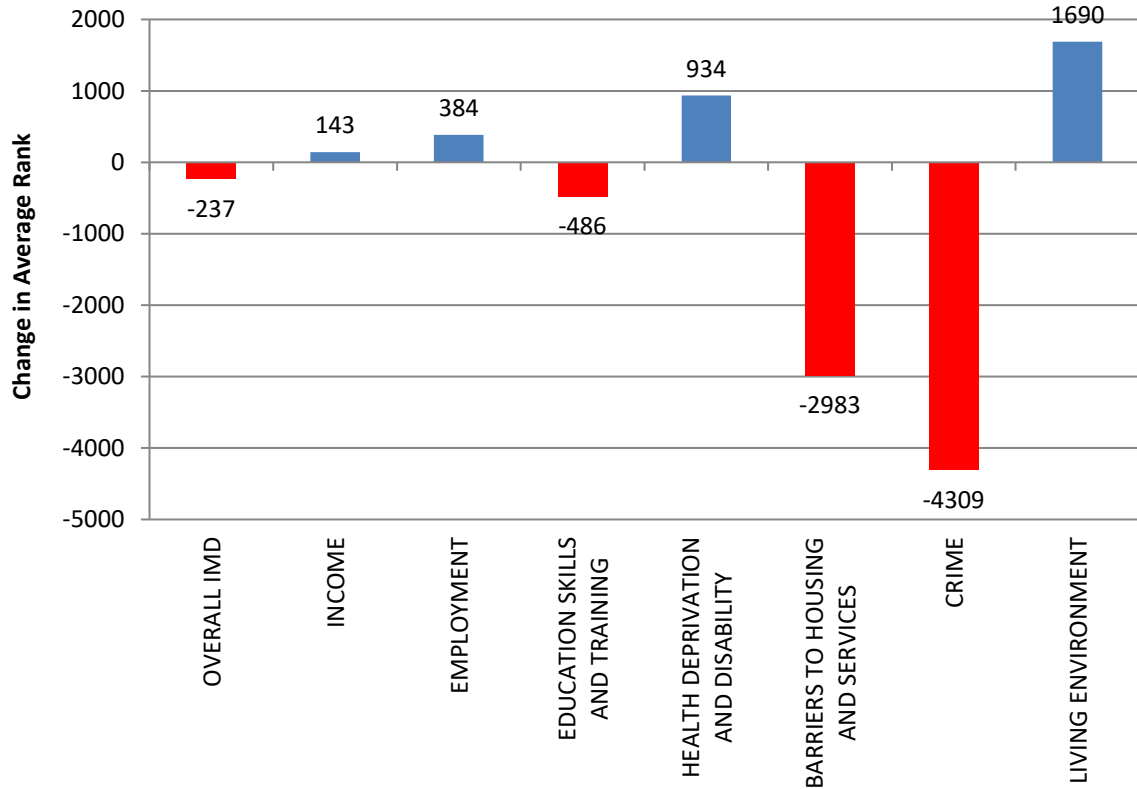
Killingworth Ward



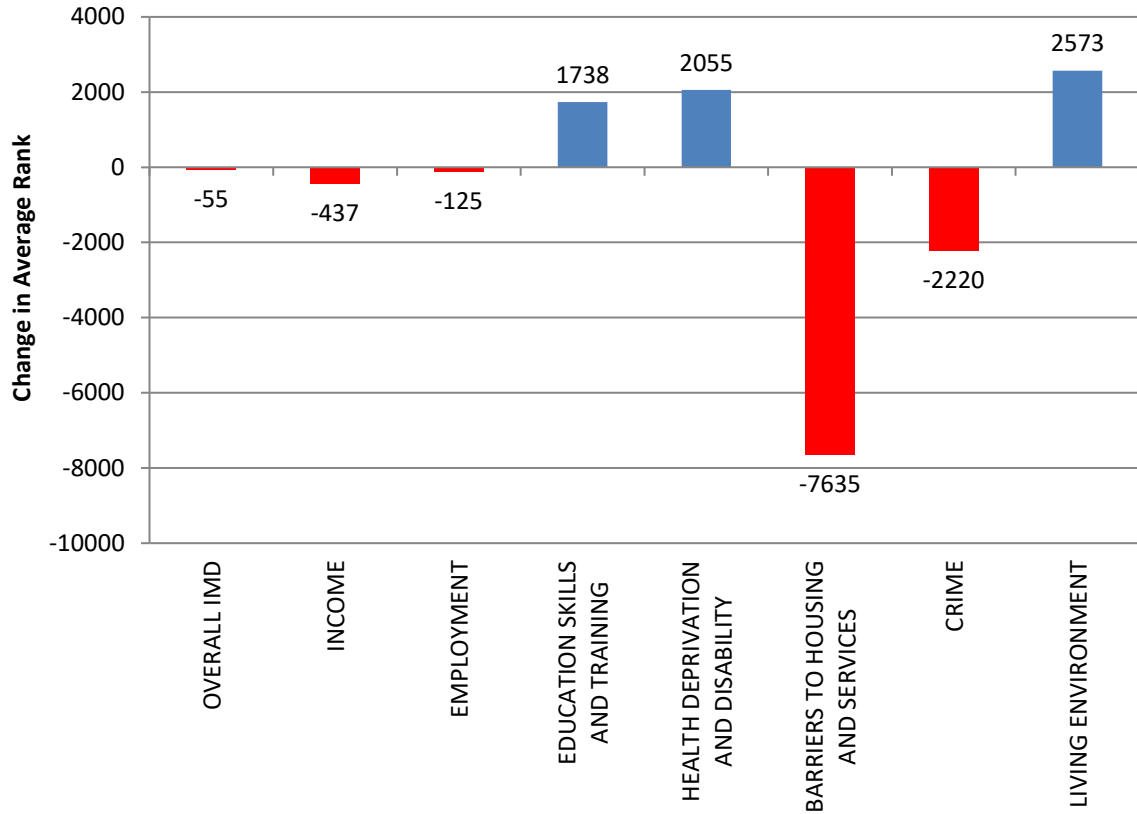
Longbenton Ward



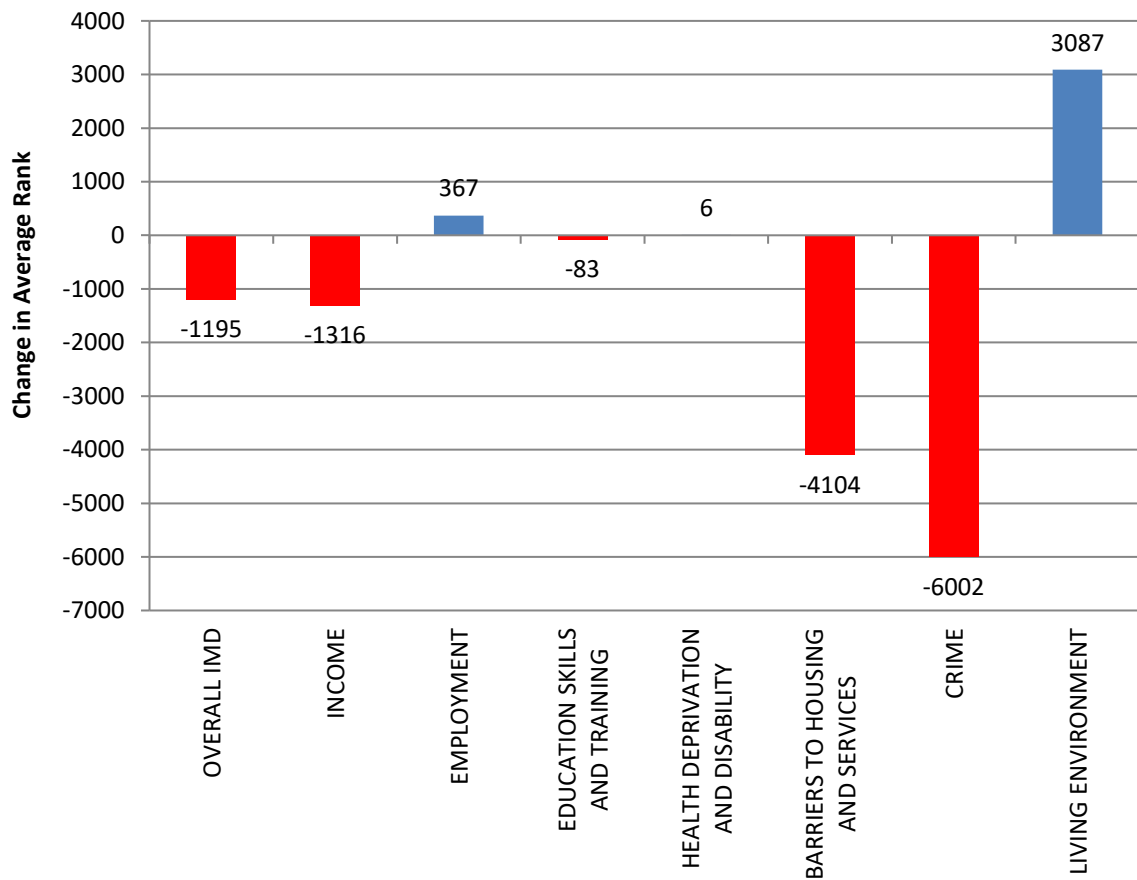
Monkseaton North Ward



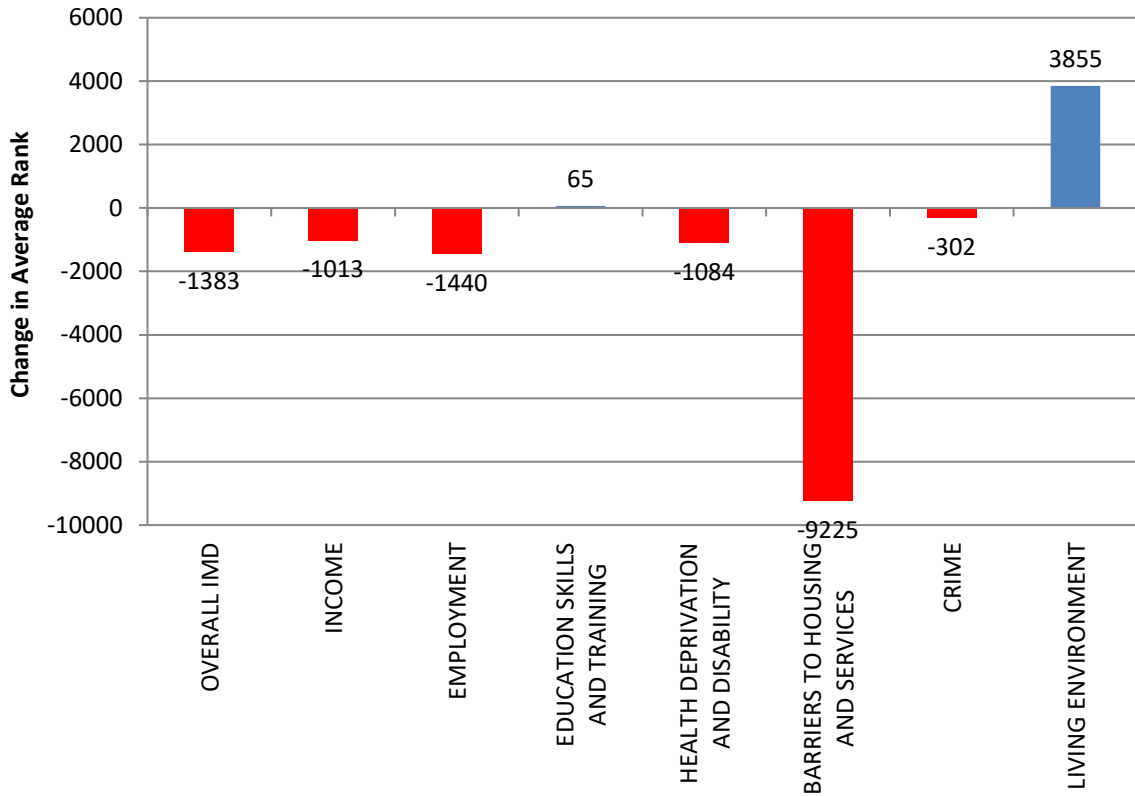
Monkseaton South Ward



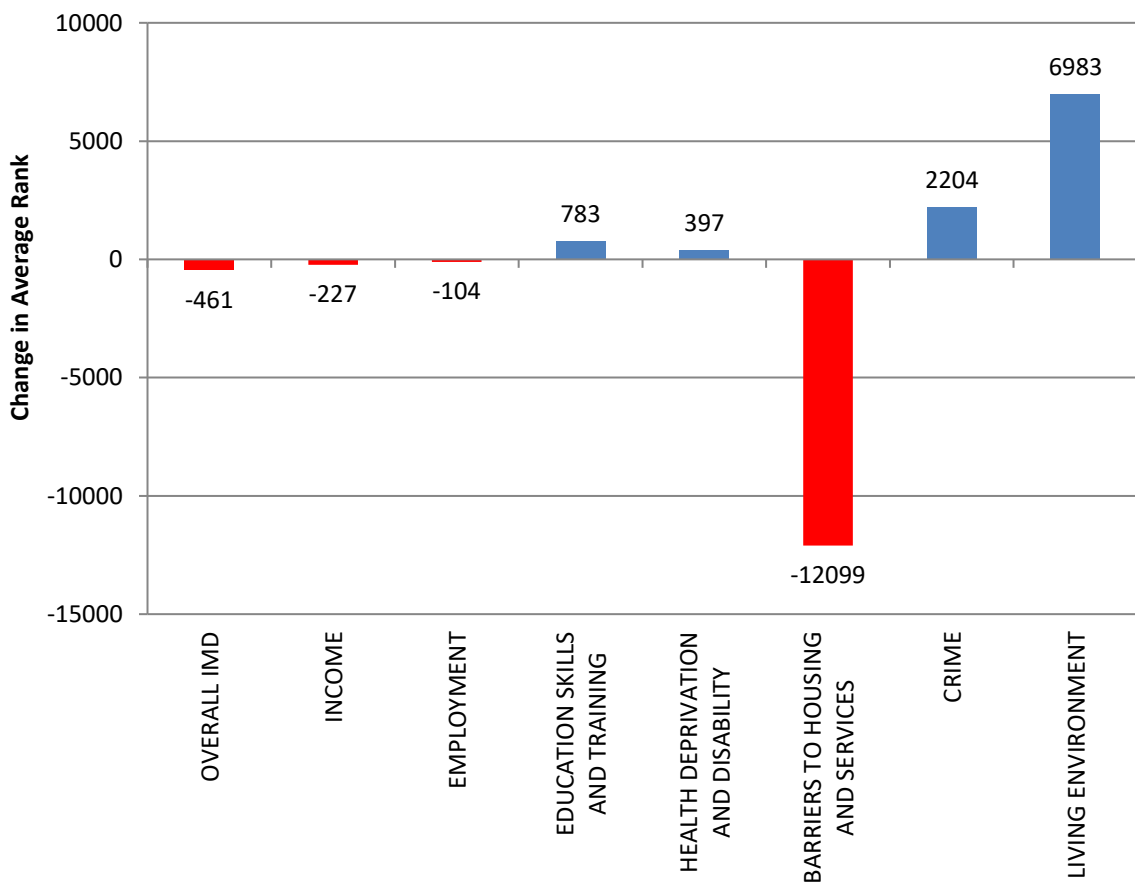
Northumberland Ward



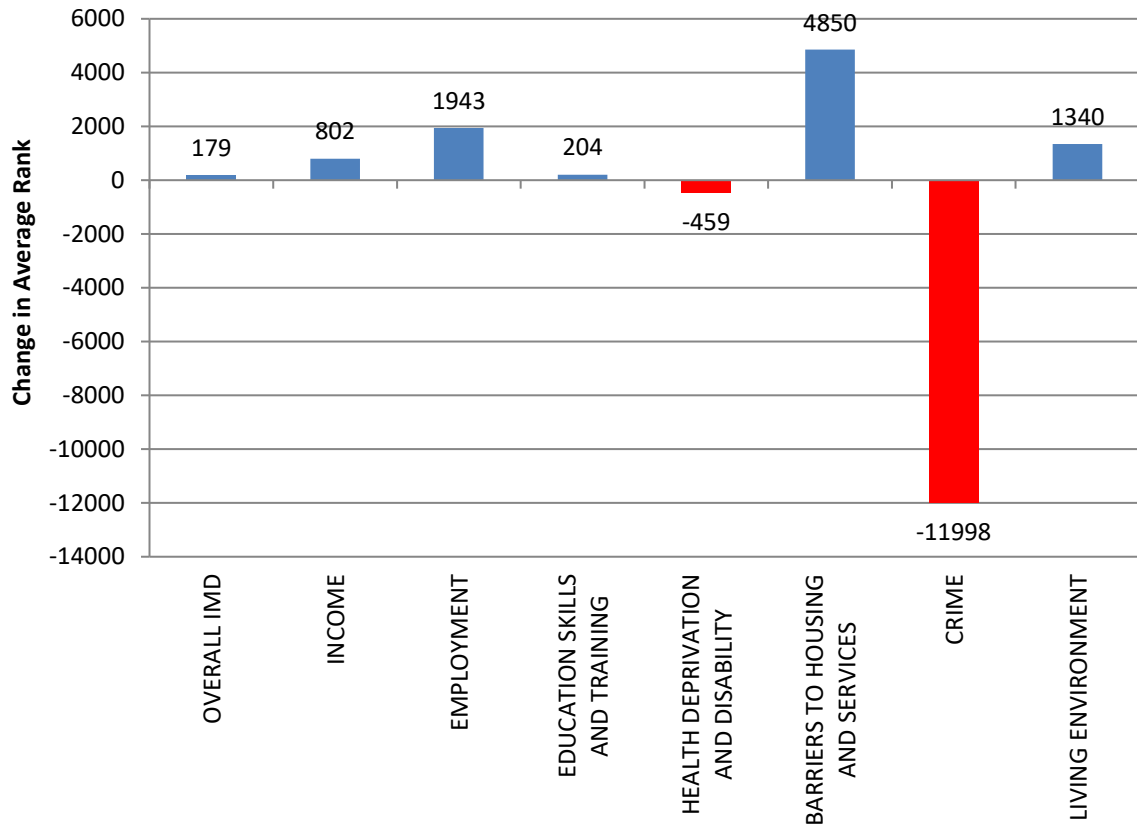
Preston Ward



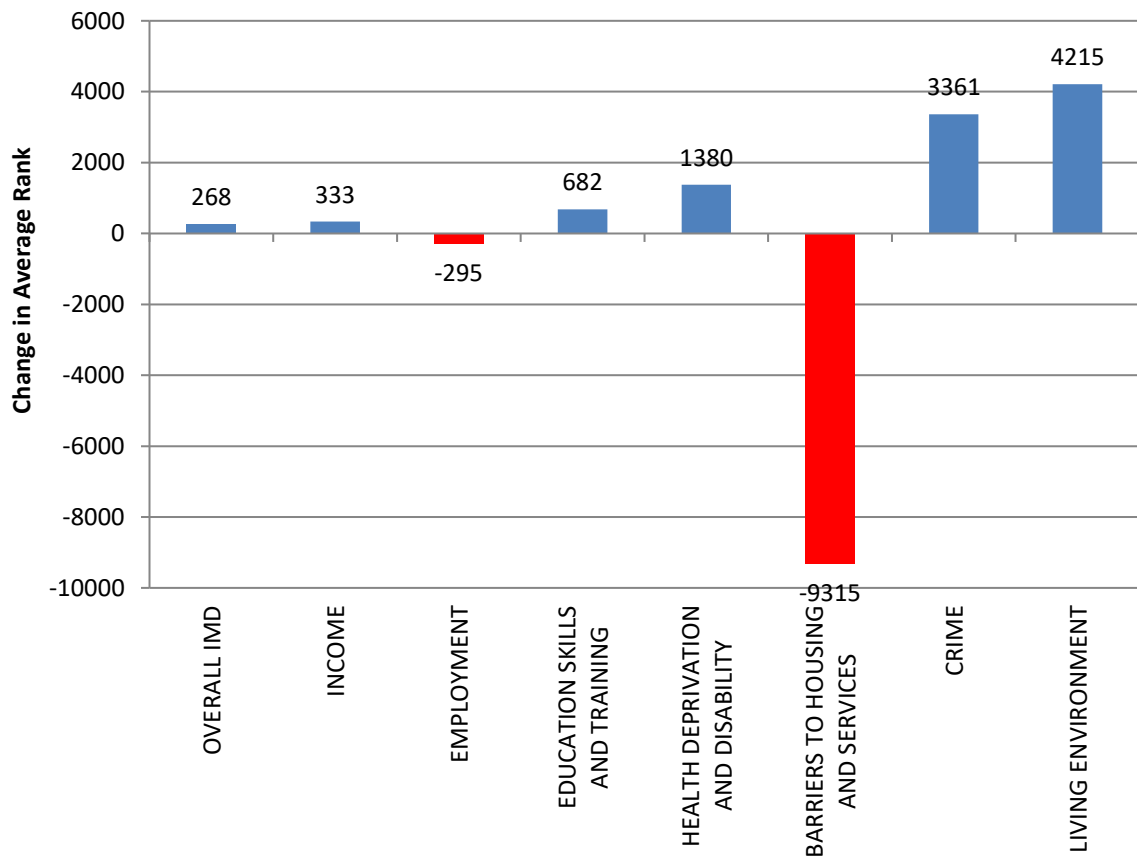
Riverside Ward



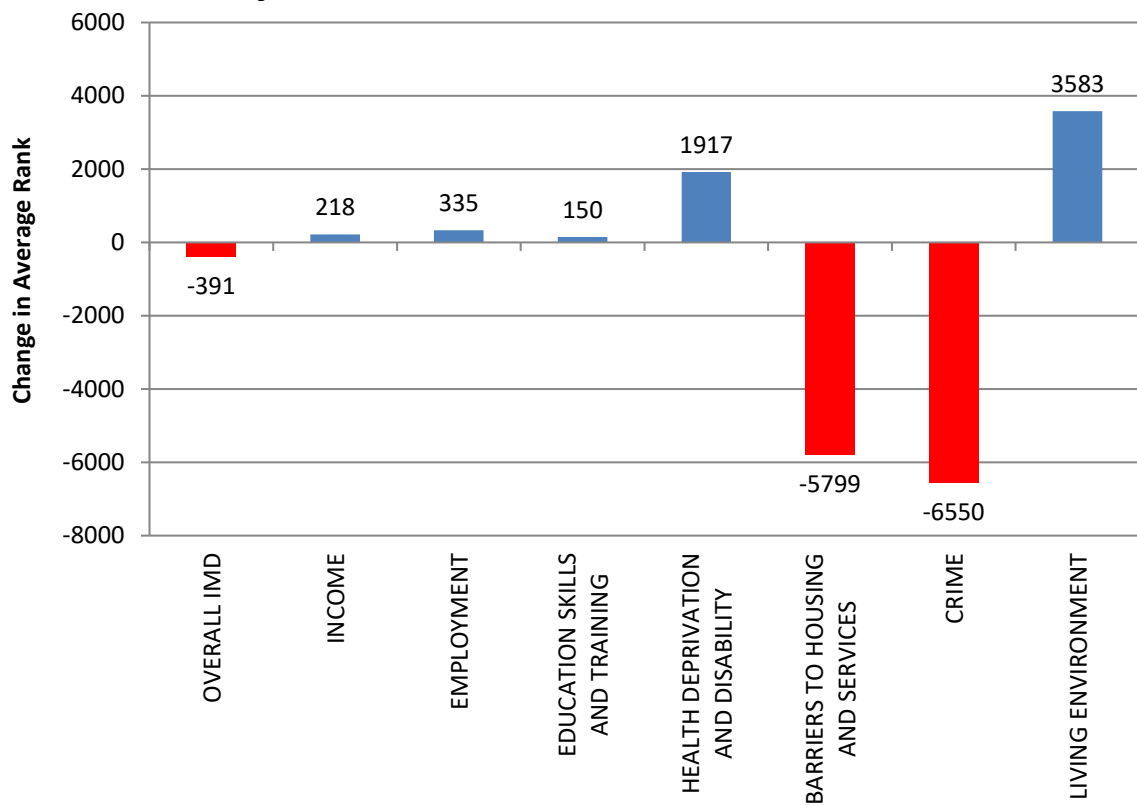
St Mary's Ward



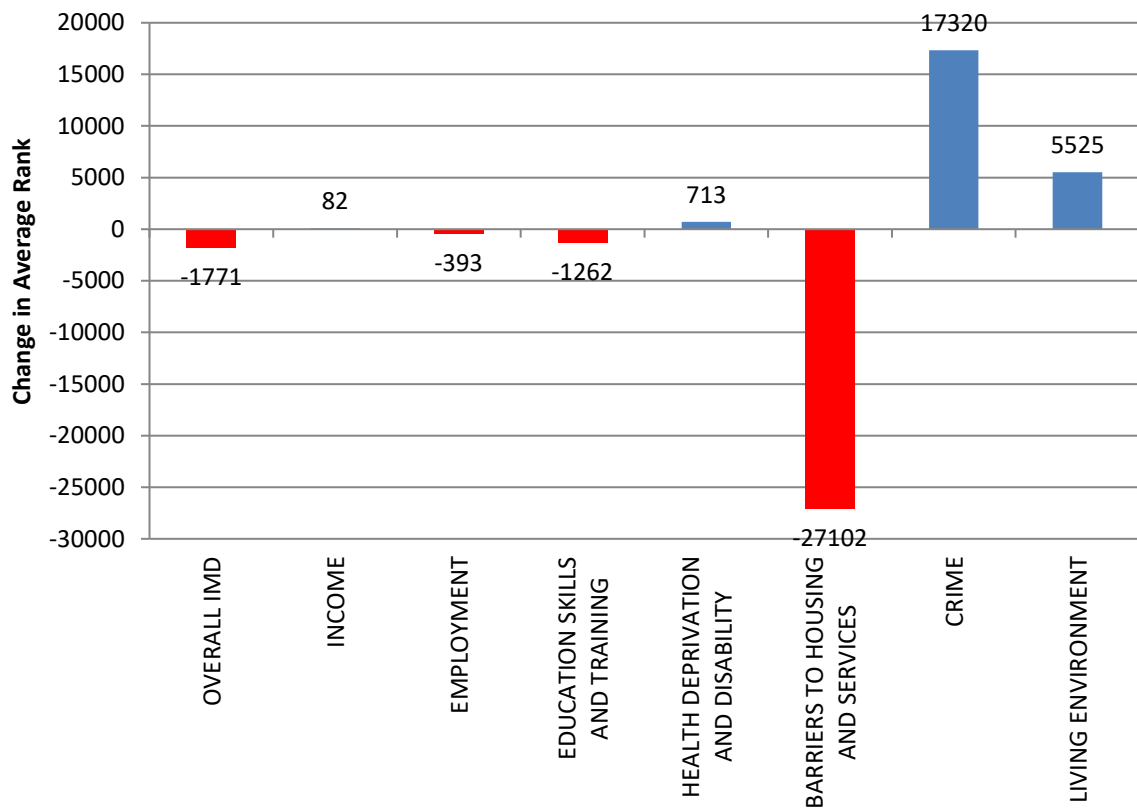
Tynemouth Ward



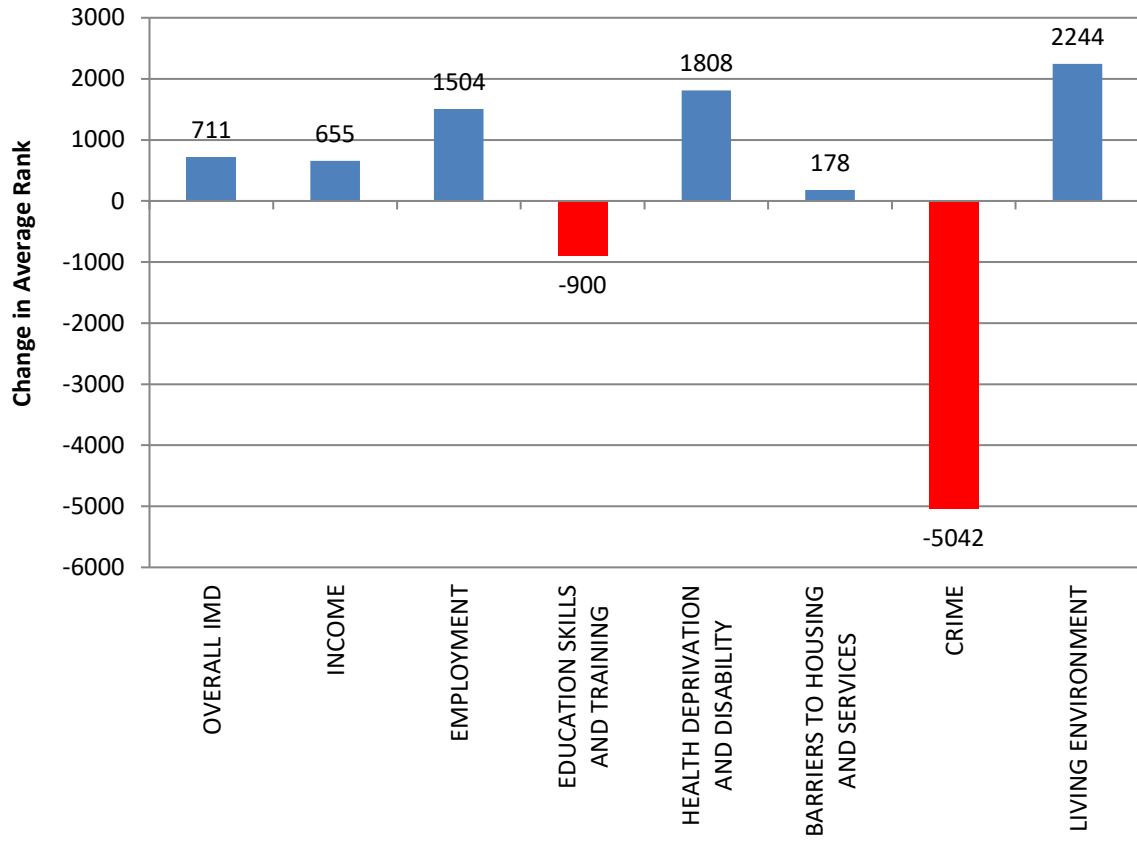
Valley Ward



Wallsend Ward



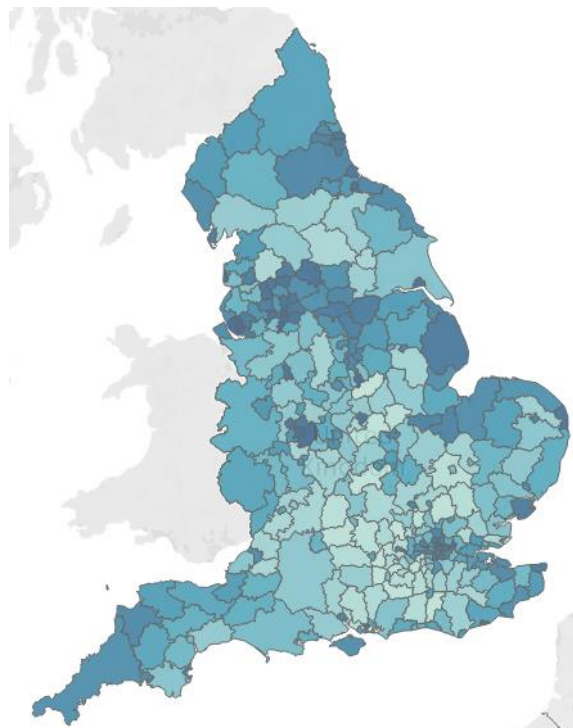
Weetslade Ward



4. A national and regional view

Middlesbrough, Liverpool, Knowsley, Kingston upon Hull and Manchester are the local authorities with the highest proportions of neighbourhoods among the most deprived in England. This is largely unchanged from 2015

The heatmap below shows the relative rankings across England (darker shade equates to more deprived)



The table below shows the rankings for the 12 north east authorities.

