

# Ground Minibeast ID Sheet

How many minibeasts can you find in the park?



**Millipede**

2 pairs of legs per body segment  
41 – 55 segments



**Flat backed millipede**

20 – 30 segments

**Devil's coach horse beetle**



Body segmented  
20 – 28 mm in length



**Earthworm**

Body divided into many segments  
It breathes through its skin

**Ladybird**

4 – 5 mm beetle  
with 7 – 11 spots  
Legs can be tucked away under the body



Pictures shown are not to scale

**North Tyneside Parks**

Outdoor Learning and Environmental Education



North Tyneside Council

## Garden spider

8 legs, runs quickly  
120mm in length



## Ground beetle

Shiny wing cases  
3 – 36 mm in length



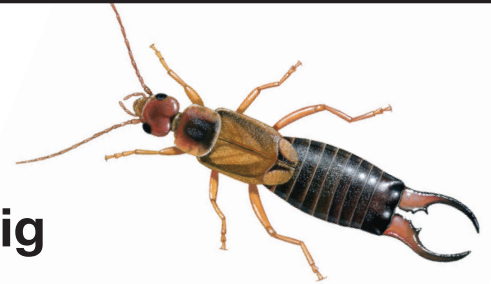
## Harvestman

8 legs  
They are not spiders



## Earwig

Male has curved abdomen  
Female has straight abdomen



## Slug

Breathes through its slimy body  
Leaves a trail of slime



## Snail

Brown lipped snail shown  
Hides in shell



## Woodlouse

Body in segments  
7 pairs of legs



## Centipede

1 pair of legs per body segment  
15 – 21 pairs of legs

