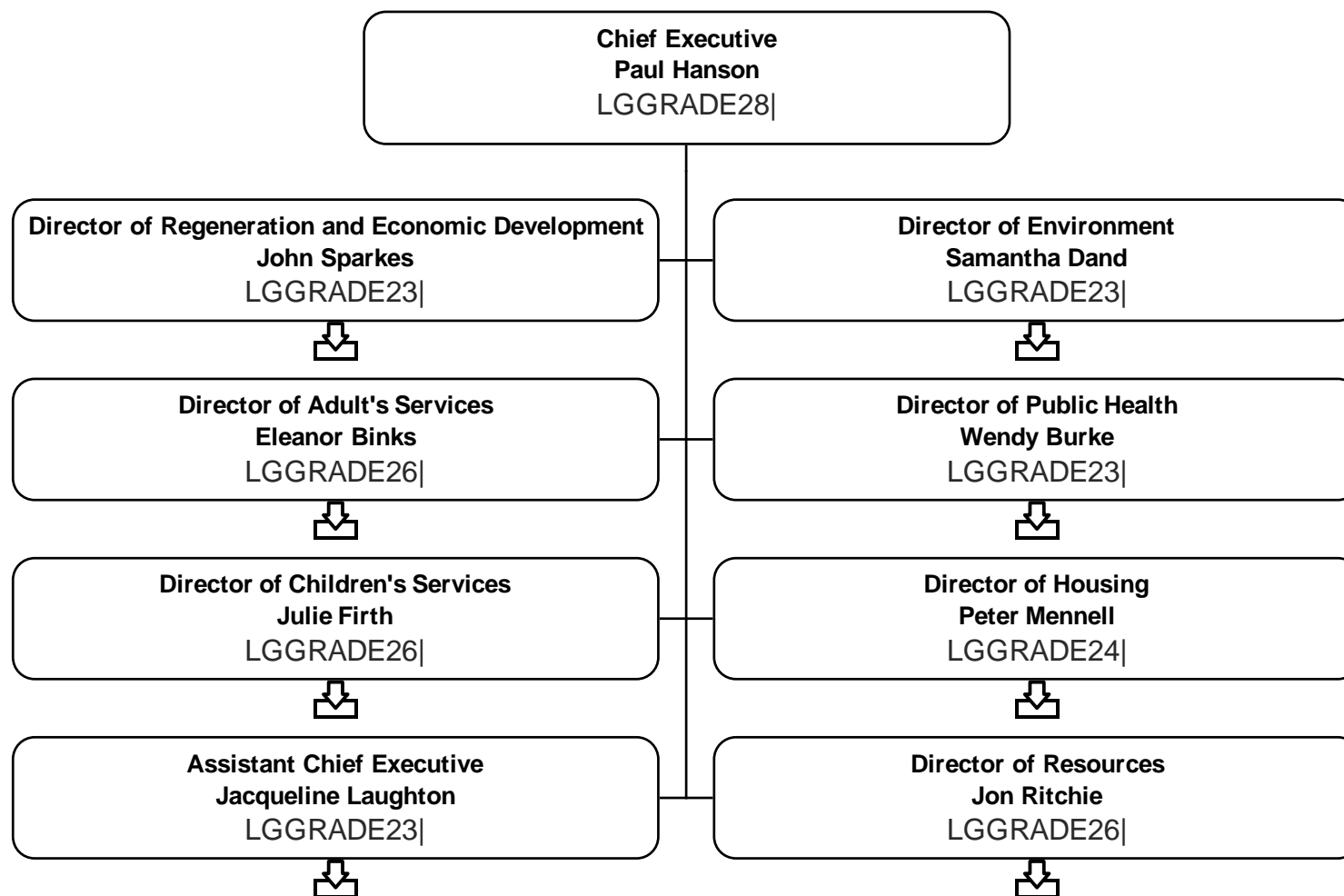
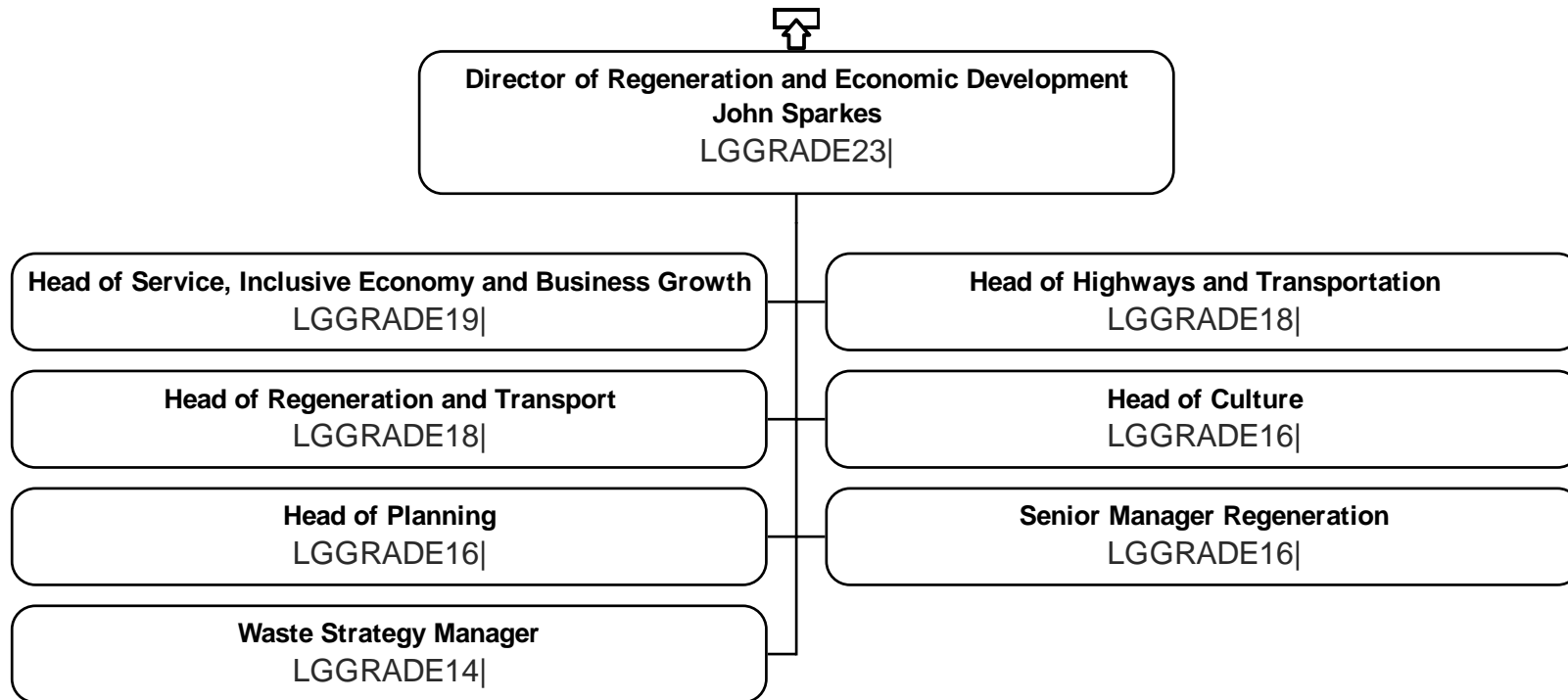


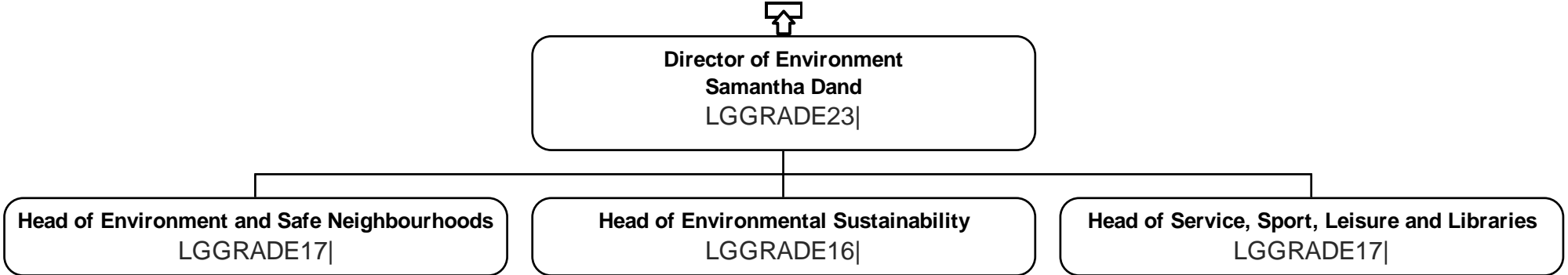
Headcount: 3613
FTE: 2958.89



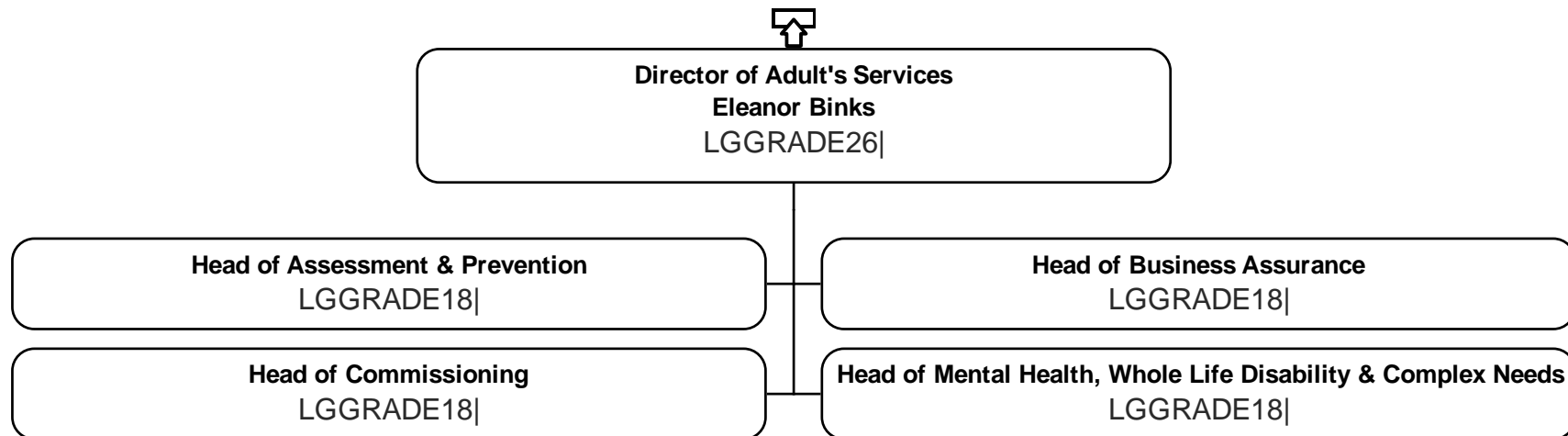
Headcount: 67
FTE: 35.22



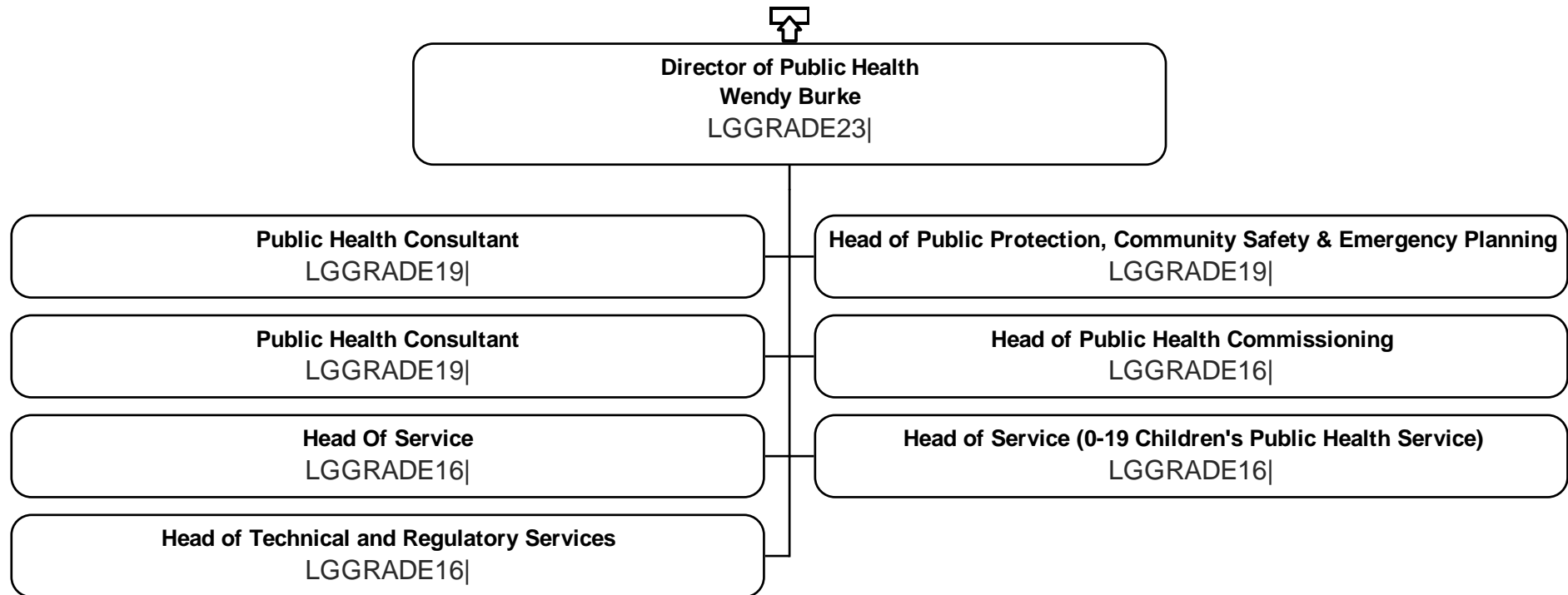
Headcount: 846
FTE: 613.92



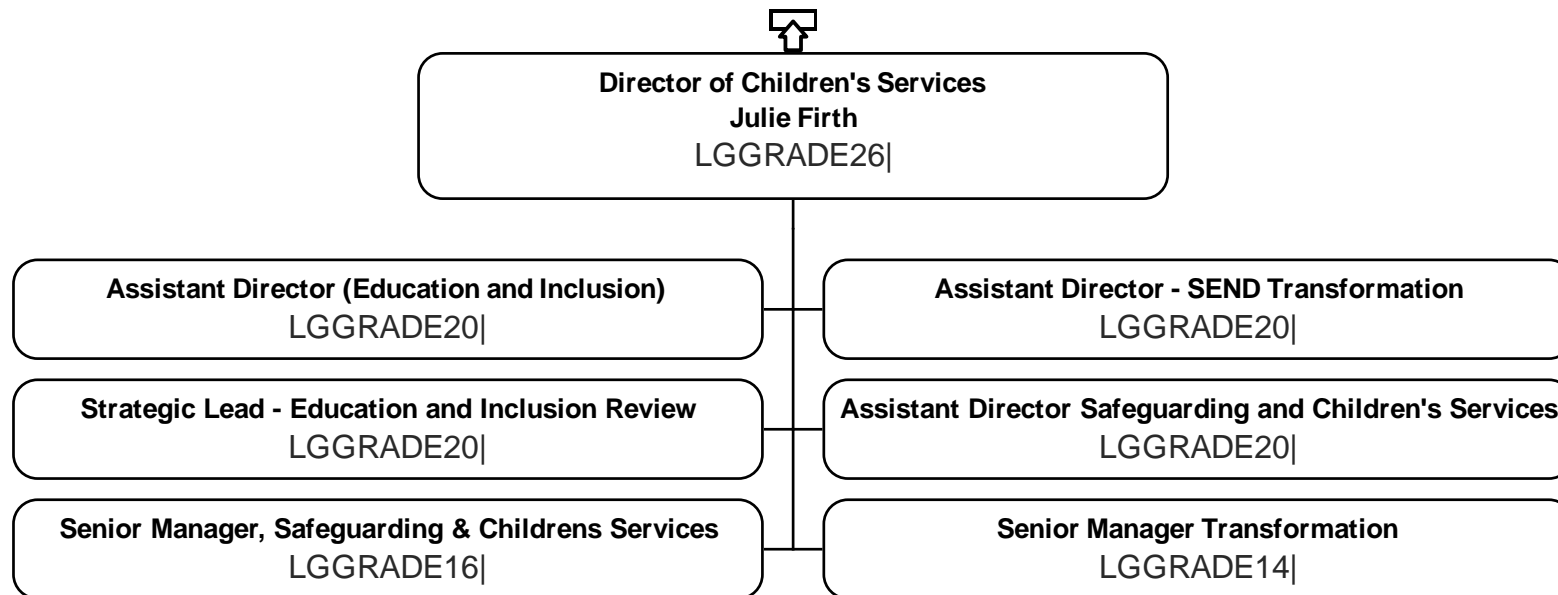
Headcount: 516
FTE: 428.33



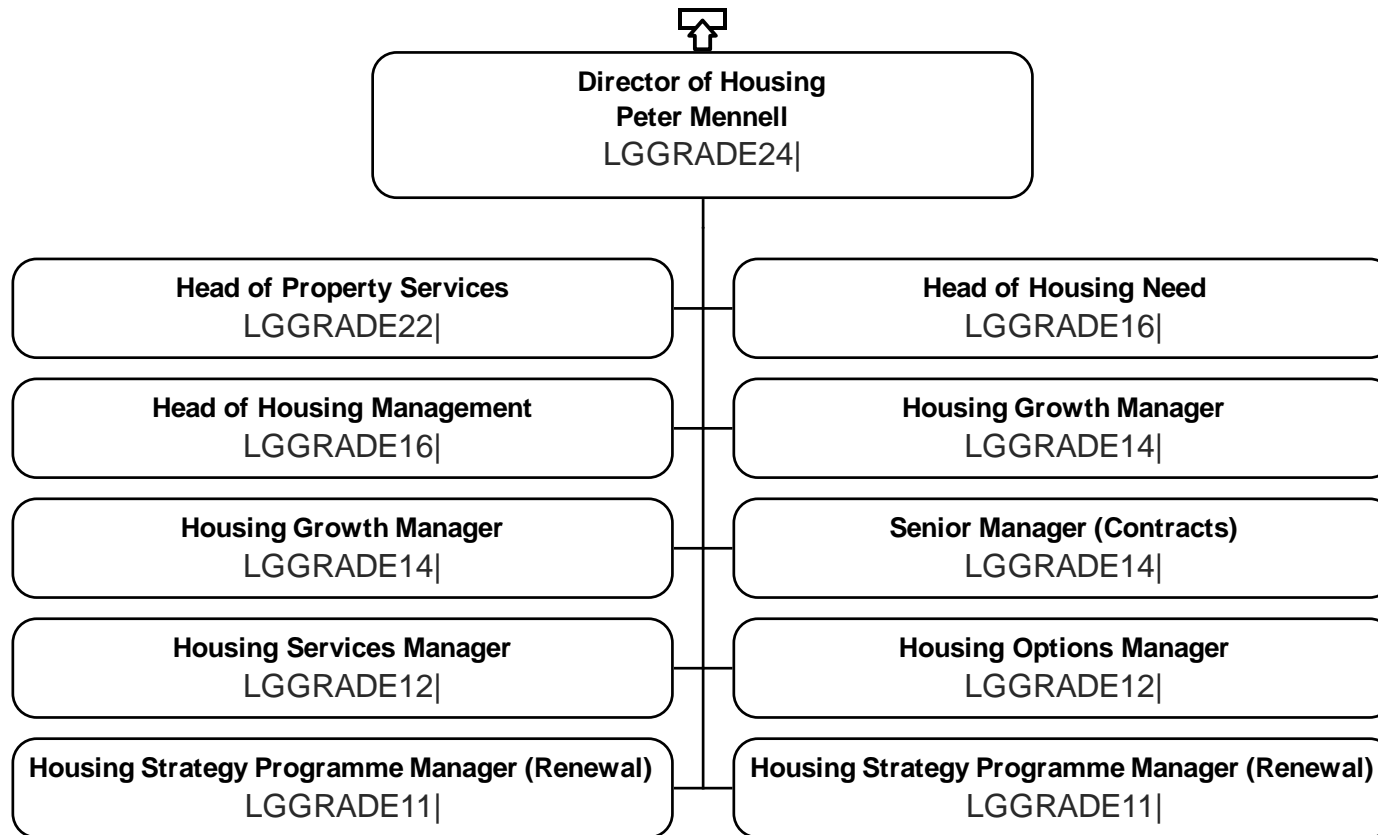
Headcount: 145
FTE: 122.04



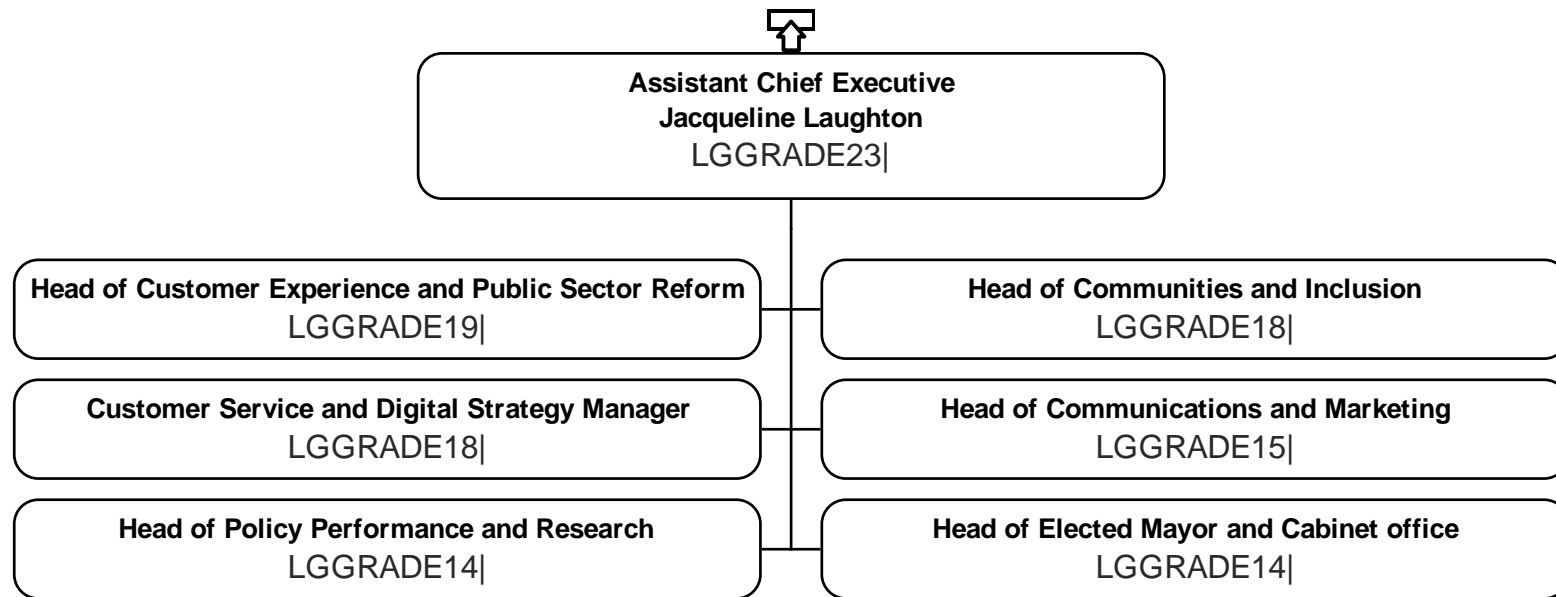
Headcount: 813
FTE: 674.78



Headcount: 598
FTE: 577.32



Headcount: 87
FTE: 70.75



Headcount: 538
FTE: 433.71

